

Current Data Parameters
 NAME JT-AKTIN-TABERSONINE-H1-CDC13-20160322
 EXPNO 20
 PROCNO 1

F2 - Acquisition Parameters
 Date_ 20160323
 Time 0.24
 INSTRUM spect
 PROBHD 5 mm PABBO BB/
 PULPROG zg30
 TD 65536
 SOLVENT CDCl3
 NS 16
 DS 2
 SWH 8223.685 Hz
 FIDRES 0.125483 Hz
 AQ 3.9846387 sec
 RG 129.89
 DW 60.800 usec
 DE 8.00 usec
 TE 295.3 K
 D1 1.00000000 sec
 TD0 1

===== CHANNEL f1 =====
 NUC1 1H
 P1 12.80 usec
 PLW1 15.84899998 W
 SF01 400.1632013 MHz

F2 - Processing parameters
 SI 65536
 SF 400.1600079 MHz
 WDW EM
 SSB 0
 LB 0.30 Hz
 GB 0
 PC 1.00

7.262
7.245
7.226
7.167
7.164
7.147
7.145
7.128
7.126

6.893
6.874
6.856
6.827
6.808

5.814
5.811
5.802
5.799
5.789
5.786
5.777
5.775
5.727
5.702



Current Data Parameters
NAME JT-AKTIN-TABERSONINE-H1-CDC13-20160322
EXPNO 20
PROCNO 1

F2 - Acquisition Parameters
Date_ 20160323
Time 0.24
INSTRUM spect
PROBHD 5 mm PABBO BB/
PULPROG zg30
TD 65536
SOLVENT CDCl3
NS 16
DS 2
SWH 8223.685 Hz
FIDRES 0.125483 Hz
AQ 3.9846387 sec
RG 129.89
DW 60.800 usec
DE 8.00 usec
TE 295.3 K
D1 1.00000000 sec
TD0 1

===== CHANNEL f1 =====
NUC1 1H
P1 12.80 usec
PLW1 15.84899998 W
SF01 400.1632013 MHz

F2 - Processing parameters
SI 65536
SF 400.1600079 MHz
WDW EM
SSB 0
LB 0.30 Hz
GB 0
PC 1.00



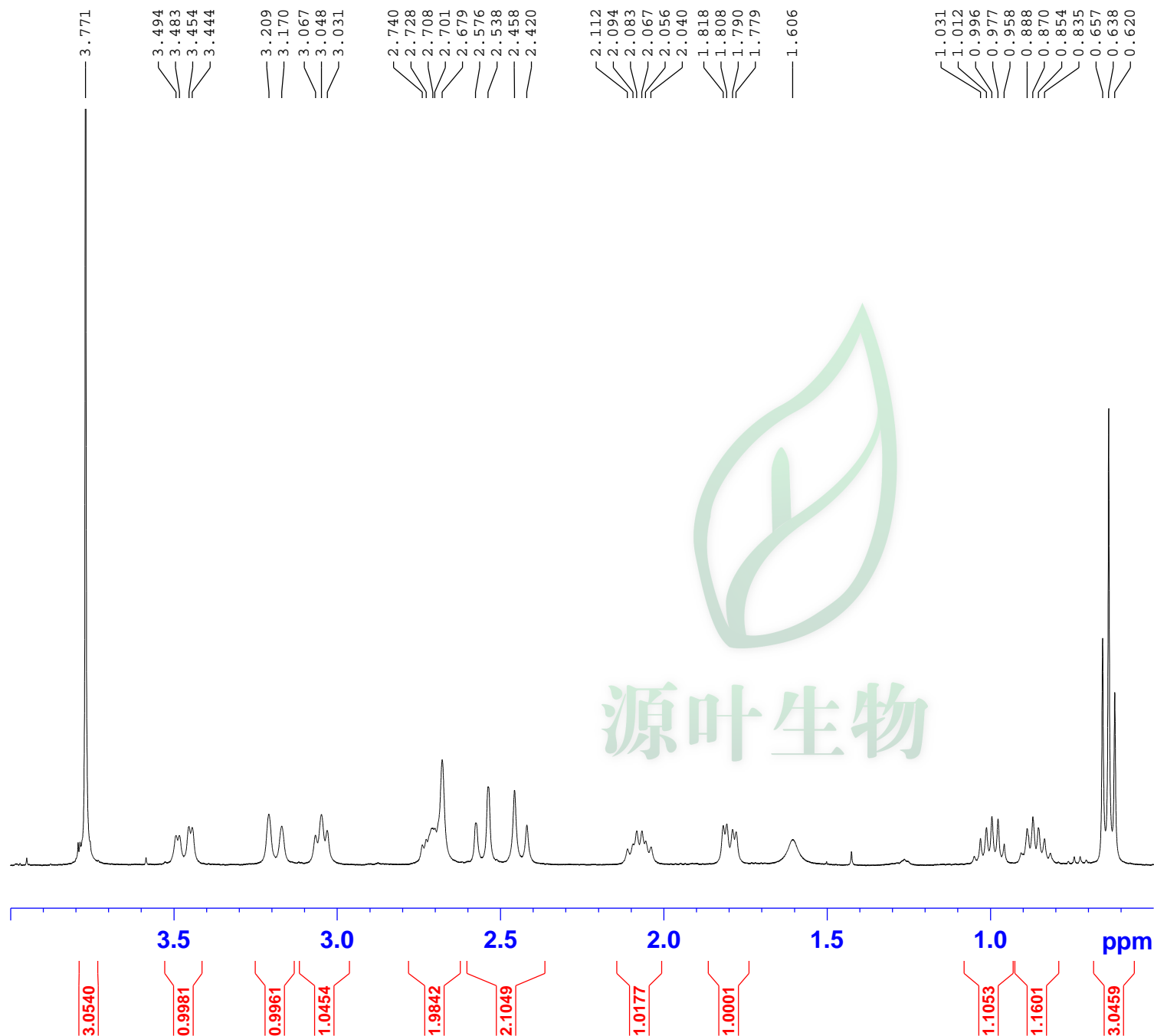
源叶生物

7.4 7.3 7.2 7.1 7.0 6.9 6.8 6.7 6.6 6.5 6.4 6.3 6.2 6.1 6.0 5.9 5.8 5.7 ppm

0.9991
1.0508

1.0142
1.0188

1.0000
0.9775



Current Data Parameters
NAME JT-AKTIN-TABERSONINE-H1-CDC13-20160322
EXPNO 20
PROCNO 1

F2 - Acquisition Parameters
Date_ 20160323
Time 0.24
INSTRUM spect
PROBHD 5 mm PABBO BB/
PULPROG zg30
TD 65536
SOLVENT CDC13
NS 16
DS 2
SWH 8223.685 Hz
FIDRES 0.125483 Hz
AQ 3.9846387 sec
RG 129.89
DW 60.800 usec
DE 8.00 usec
TE 295.3 K
D1 1.00000000 sec
TD0 1

===== CHANNEL f1 =====
NUC1 1H
P1 12.80 usec
PLW1 15.84899998 W
SF01 400.1632013 MHz

F2 - Processing parameters
SI 65536
SF 400.1600079 MHz
WDW EM
SSB 0
LB 0.30 Hz
GB 0
PC 1.00