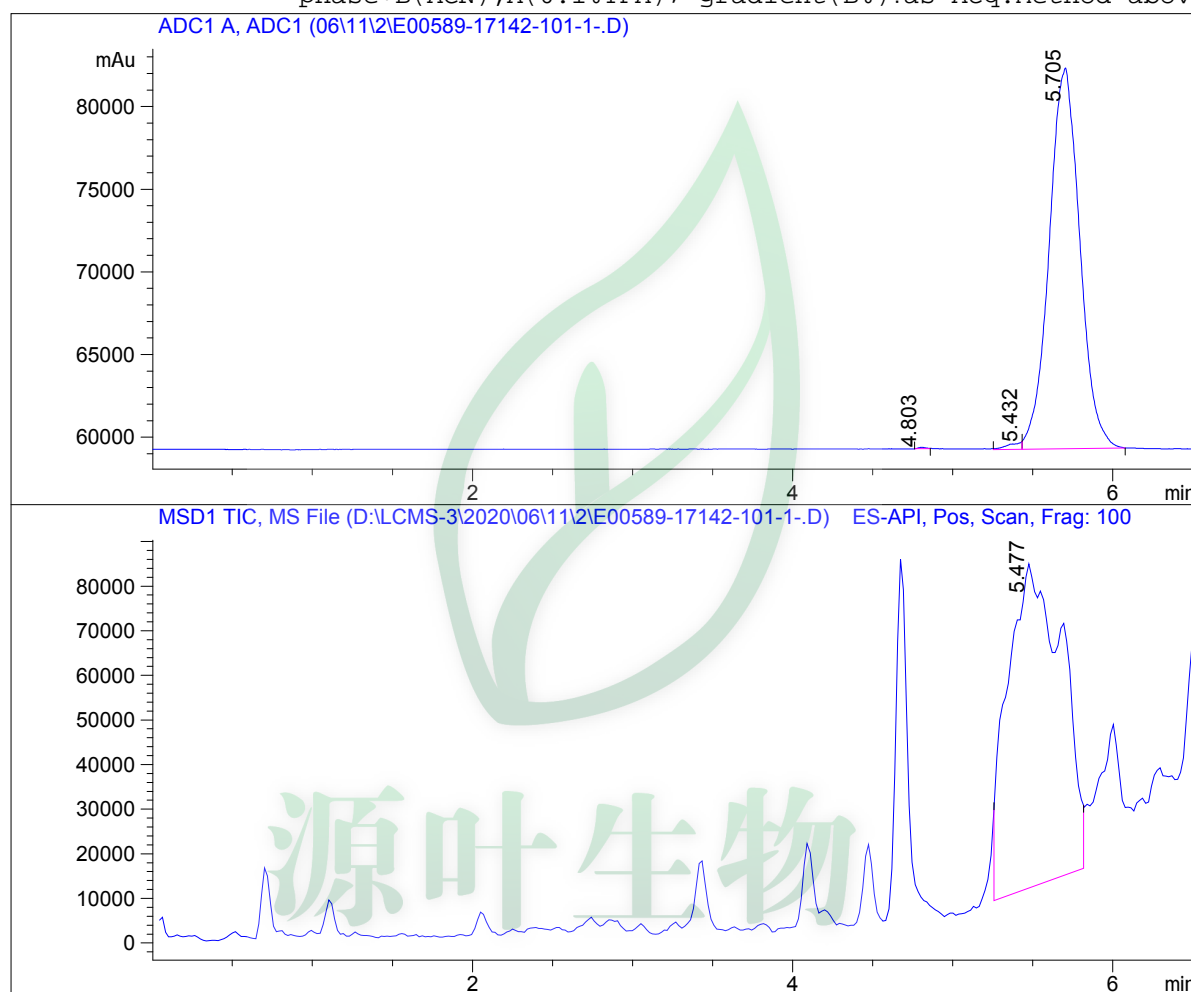


# QC Report

Sample Name : E00589-17142-101-1  
Data File : D:\LCMS-3\2020\06\11\2\E00589-17142-101-1-.D  
Injection Date : Thu, 11. Jun. 2020 Inj. Vol. : 5ul  
Acq Operator : LCMS-3 Location : Vial 50  
Acq. Method : D:\lcms-3\2020\06\11\2\P-50-95-TFA-1ML.M  
Sample Info. :  
Method Info. : column:Agilent EC-C18;column size:3.0\*50mm,4um ;mobile  
phase:B(ACN),A(0.1%TFA); gradient(B%):as Acq.Method above



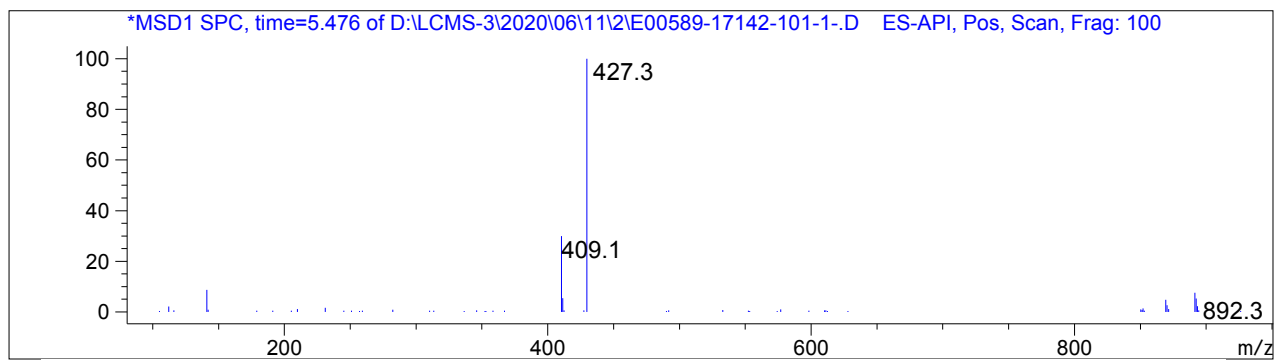
## Integration Results

Signal 1: ADC1 A, ADC1

#	R.T.	Type	Height	Height%	Width	Area	Area %
1	4.803	MM	74.858	0.318	0.059	263.264	0.085
2	5.432	MF	462.360	1.962	0.094	2609.721	0.845
3	5.705	FM	23034.035	97.721	0.221	306088.000	99.070

Signal 2: MSD1 TIC, MS File

#	R.T.	Type	Height	Height%	Width	Area	Area %
1	5.477	MM	73029.219	100.000	0.389	1.704e+006	100.000



\*\*\* End of Report \*\*\*



源叶生物