

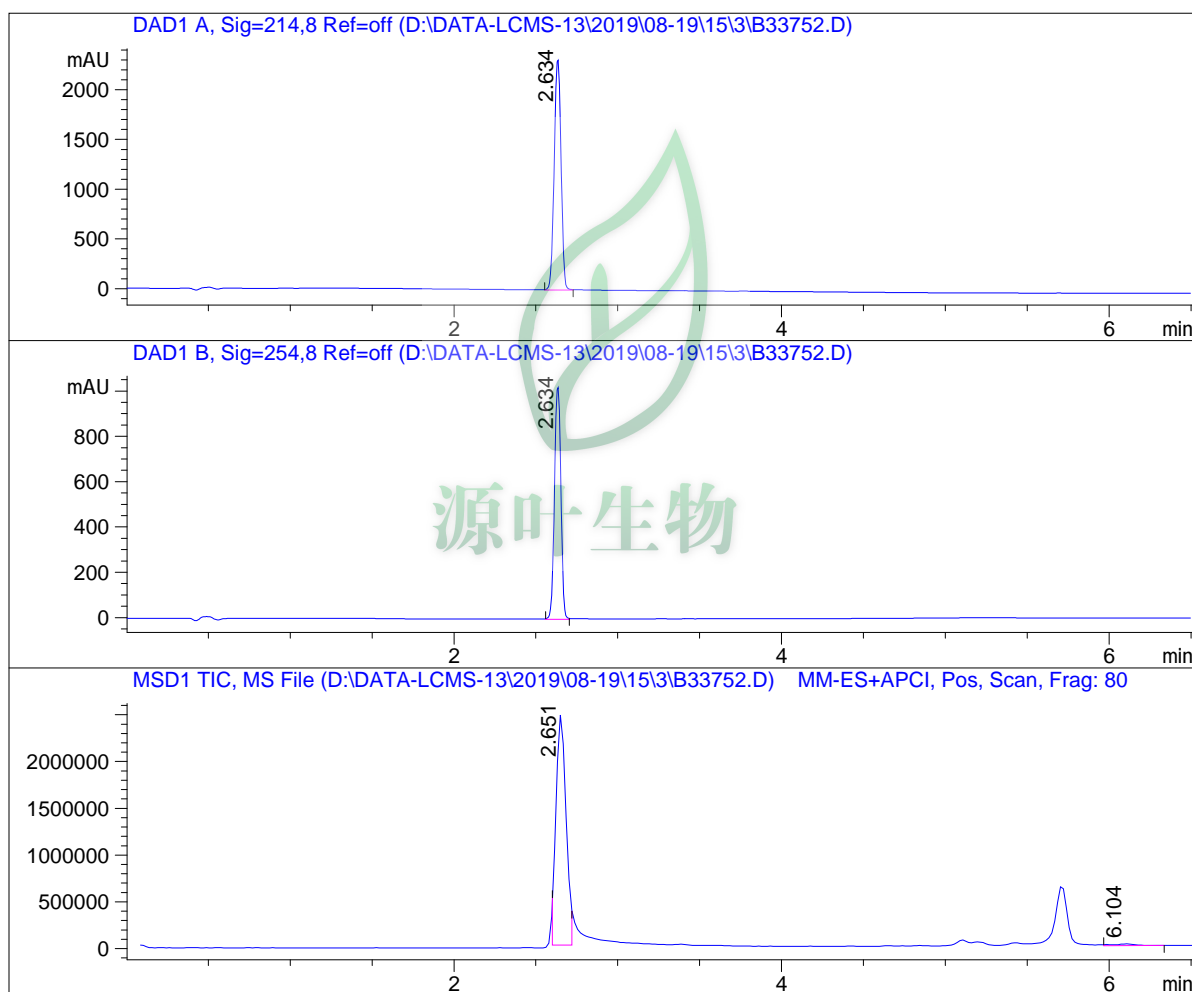


# Sundia Meditech Co.Ltd

## QC Report

388 Jialilue Road  
Zhangjiang Hightech Park  
Shanghai, China  
Post code : 201203  
Tel : 8621-51098642  
Fax : 8621-51903505

Sample Name : B33752  
Data File : D:\DATA-LCMS-13\2019\08-19\15\3\B33752.D  
Injection Date : Thu, 15. Aug. 2019 Inj. Vol. : 5ul  
Acq Operator : LCMS-13 Location : Vial 67  
Acq. Method : D:\data-lcms-13\2019\08-19\15\3\P-05-95.M  
Method Info.: column:C18;column size:4.6\*50mm ;mobile phase:B(ACN),  
A(0.02%NH4Ac); gradient(B%):as Acq.Method above



### Integration Results

Signal 1: DAD1 A, Sig=214,8 Ref=off

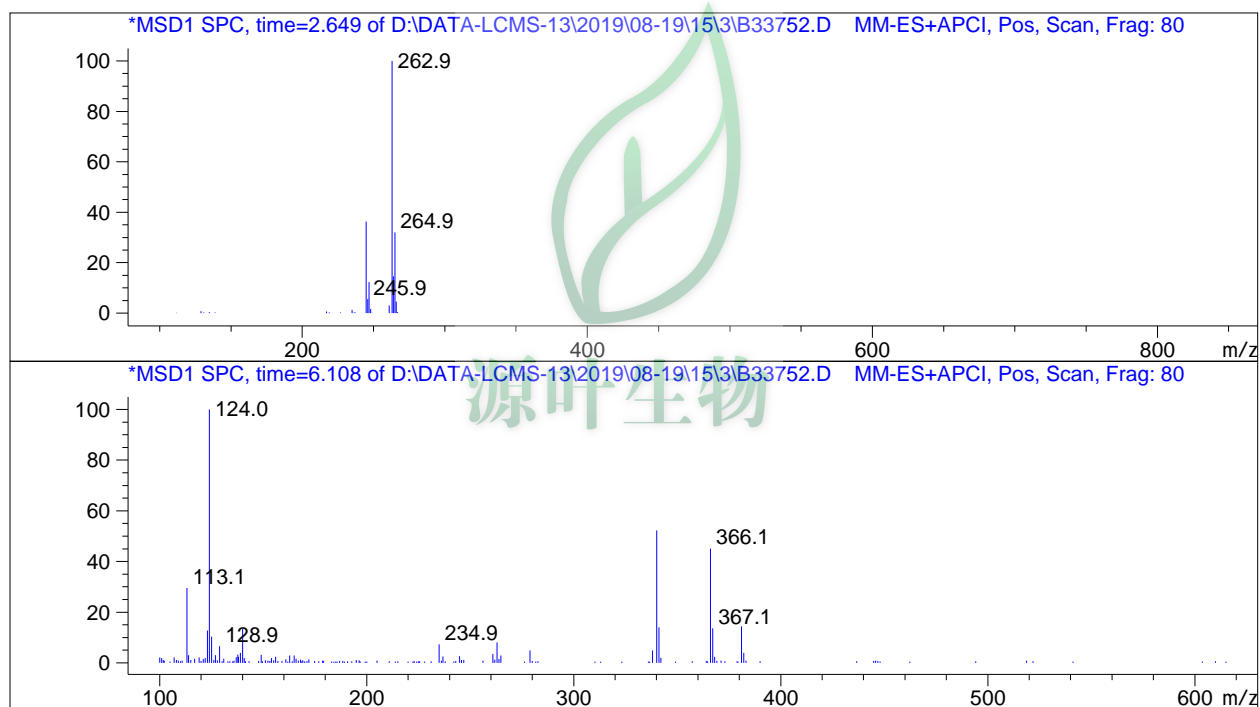
#	R.T.	Type	Height	Height%	Width	Area	Area %
1	2.634	MM	2346.734	100.000	0.048	6778.952	100.000

Signal 2: DAD1 B, Sig=254,8 Ref=off

#	R.T.	Type	Height	Height%	Width	Area	Area %
1	2.634	MM	1036.576	100.000	0.045	2813.137	100.000

Signal 3: MSD1 TIC, MS File

#	R.T.	Type	Height	Height%	Width	Area	Area %
1	2.651	FM	2.498e+006	99.307	0.067	1.006e+007	98.418
2	6.104	BB	17421.711	0.693	0.135	161691.078	1.582



\*\*\* End of Report \*\*\*