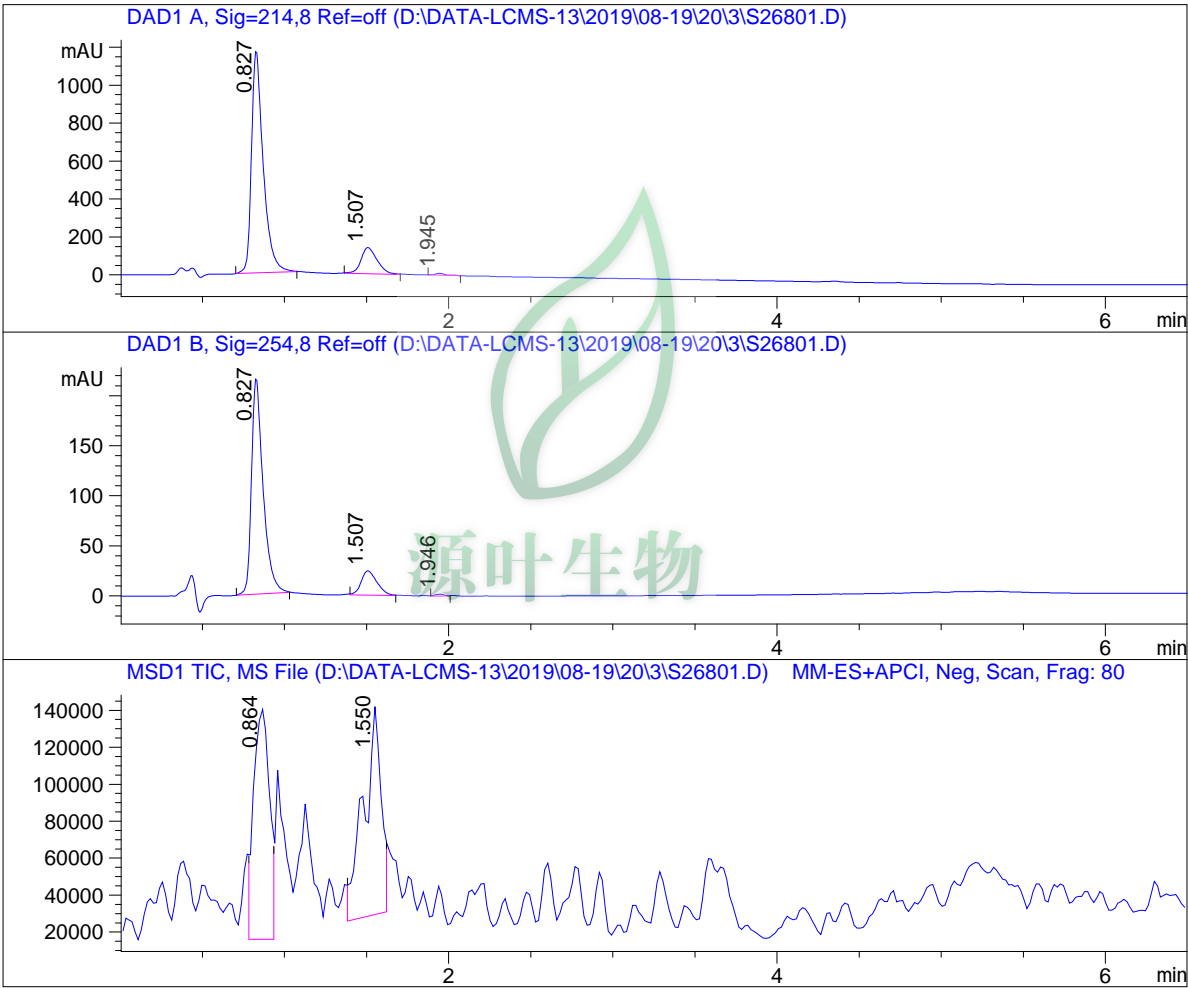


LC - MS Report

Sample Name : S26801
Data File : D:\DATA-LCMS-13\2019\08-19\20\3\S26801.D
Injection Date : Tue, 20. Aug. 2019 Inj. Vol. : 5ul
Acq Operator : LCMS-13 Location : Vial 70
Acq. Method : D:\data-lcms-13\2019\08-19\20\3\N-30-95-100-2000.M
Method Info. : column:C18;column size:4.6*50mm ;mobile phase:B(ACN),
A(0.02%NH4Ac); gradient(B%):as Acq.Method above



=====
Integration Results
=====

Signal 1: DAD1 A, Sig=214,8 Ref=off

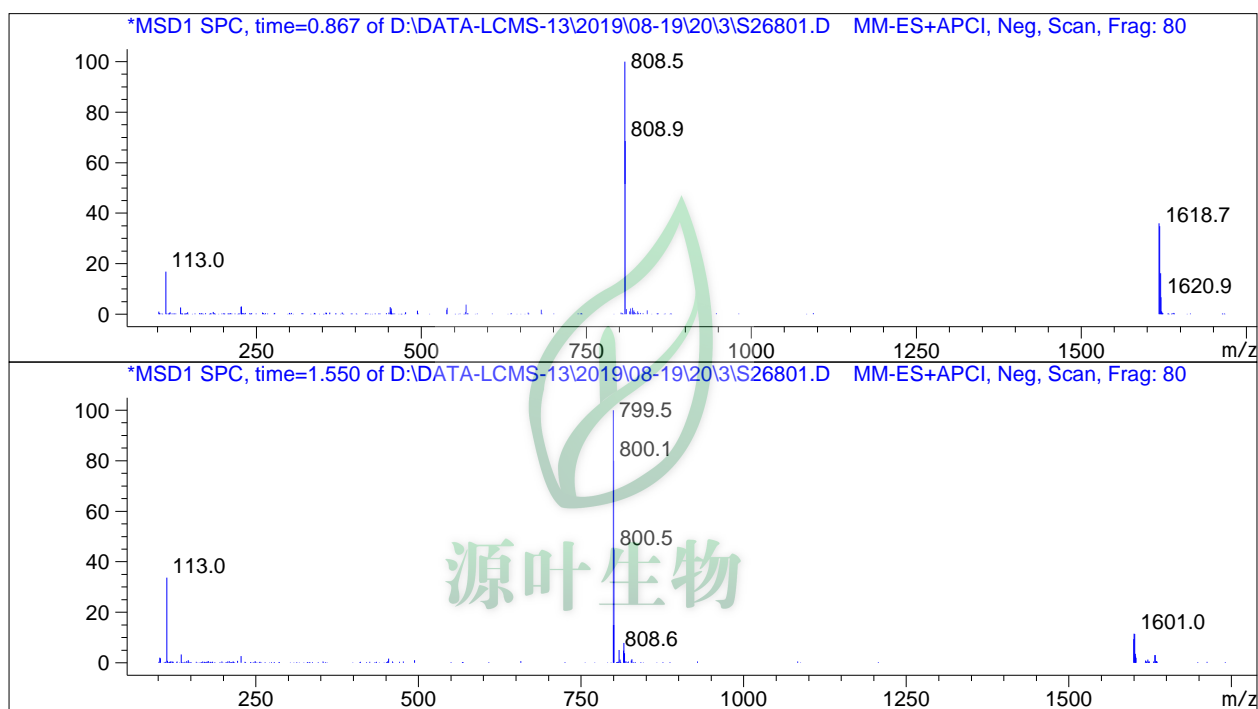
#	R.T.	Type	Height	Height%	Width	Area	Area %
1	0.827	MM	1174.968	88.810	0.082	5811.351	85.519
2	1.507	BB	138.347	10.457	0.103	940.613	13.842
3	1.945	BB	9.704	0.733	0.068	43.408	0.639

Signal 2: DAD1 B, Sig=254,8 Ref=off

#	R.T.	Type	Height	Height%	Width	Area	Area %
1	0.827	MM	216.464	89.148	0.081	1054.844	86.127
2	1.507	BB	24.419	10.056	0.102	162.415	13.261
3	1.946	MM	1.932	0.796	0.065	7.498	0.612

Signal 3: MSD1 TIC, MS File

#	R.T.	Type	Height	Height%	Width	Area	Area %
1	0.864	VV	124651.250	52.550	0.105	826608.313	49.674
2	1.550	MM	112551.672	47.450	0.124	837442.875	50.326



*** End of Report ***