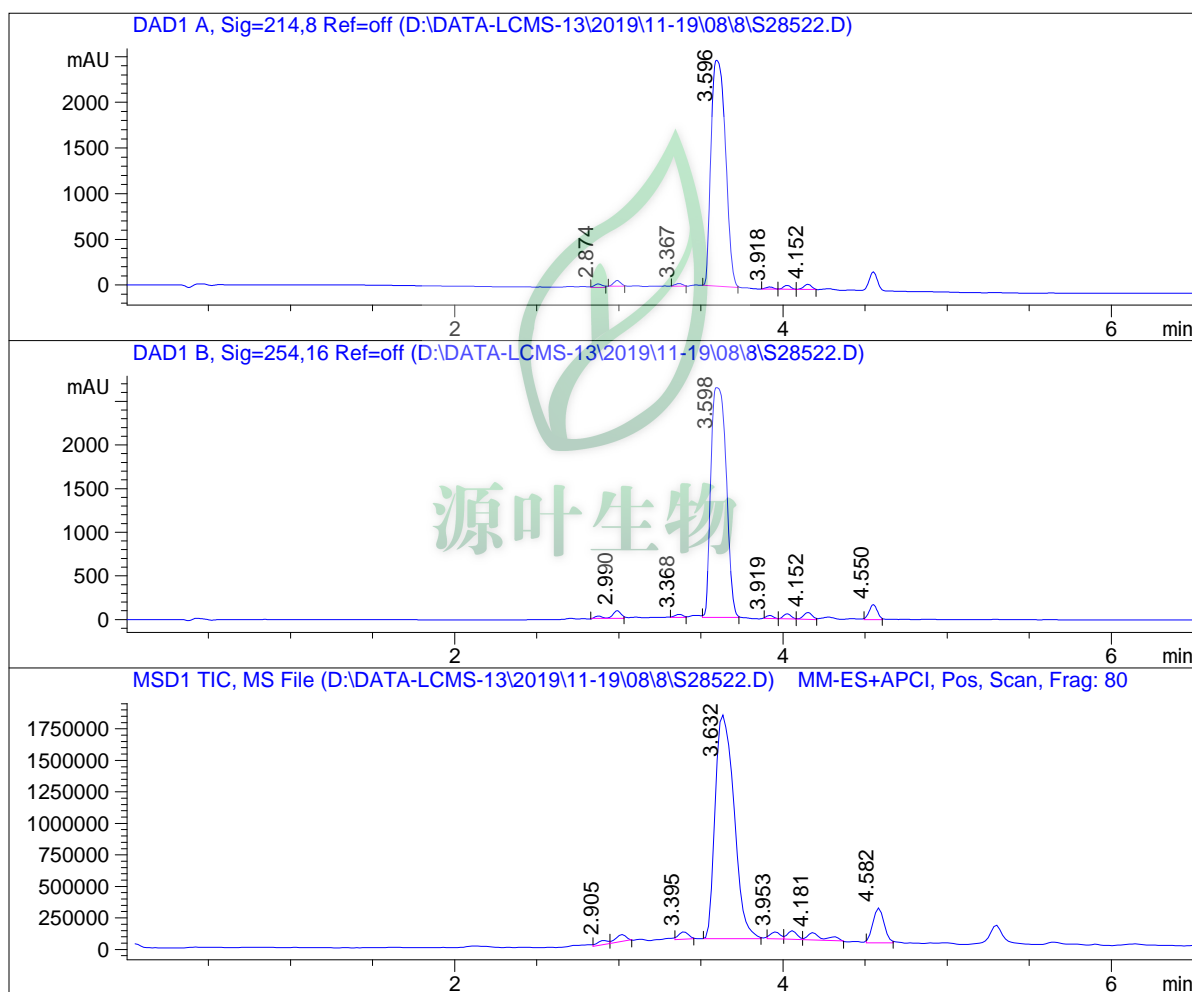


LC - MS Report

Sample Name : S28522
 Data File : D:\DATA-LCMS-13\2019\11-19\08\8\S28522.D
 Injection Date : Sat, 9. Nov. 2019 Inj. Vol. : 10ul
 Acq Operator : LCMS-13 Location : Vial 32
 Acq. Method : D:\data-lcms-13\2019\11-19\08\8\P-05-95-C2.M
 Method Info. : column:C18;column size:4.6*50mm ;mobile phase:B(ACN),
 A(0.02%NH4Ac); gradient(B%):as Acq.Method above



Integration Results

Signal 1: DAD1 A, Sig=214,8 Ref=off

#	R.T.	Type	Height	Height%	Width	Area	Area %
1	2.874	MM	36.386	1.337	0.059	128.062	0.807
2	2.990	MM	62.587	2.300	0.051	192.884	1.216
3	3.367	MM	30.094	1.106	0.054	98.266	0.620

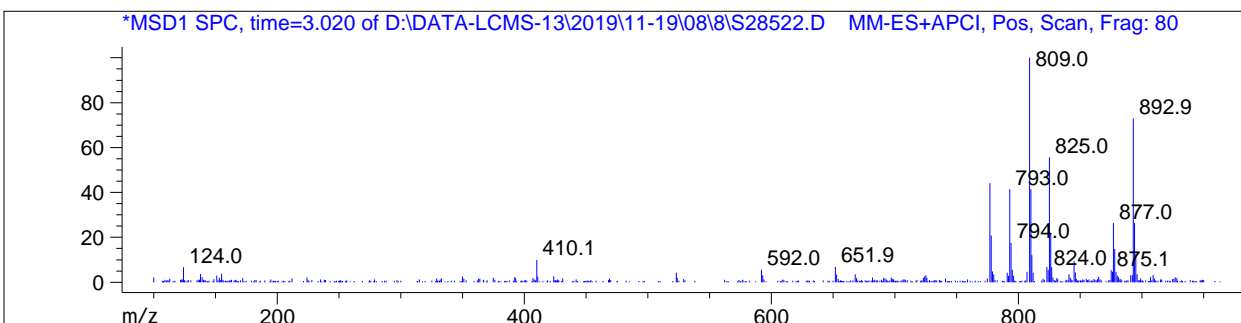
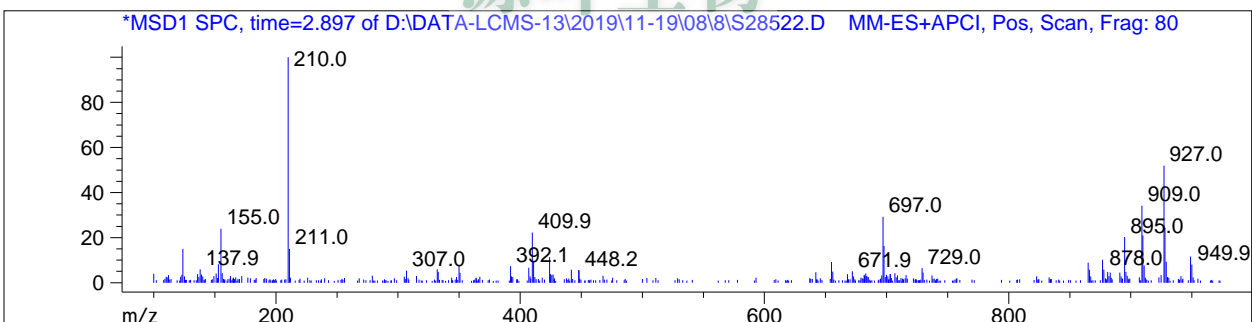
#	R.T.	Type	Height	Height%	Width	Area	Area %
4	3.596	MM	2472.591	90.847	0.102	15061.233	94.964
5	3.918	MF	23.074	0.848	0.050	69.876	0.441
6	4.025	MF	41.673	1.531	0.051	127.832	0.806
7	4.152	FM	55.292	2.032	0.055	181.812	1.146

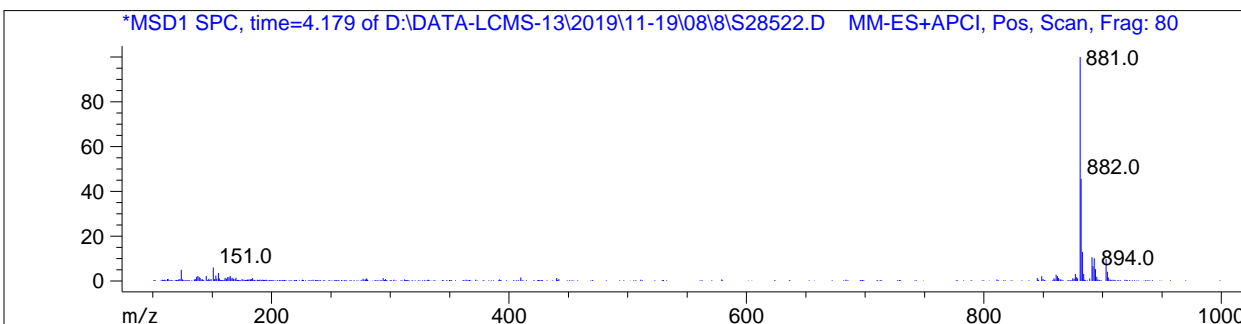
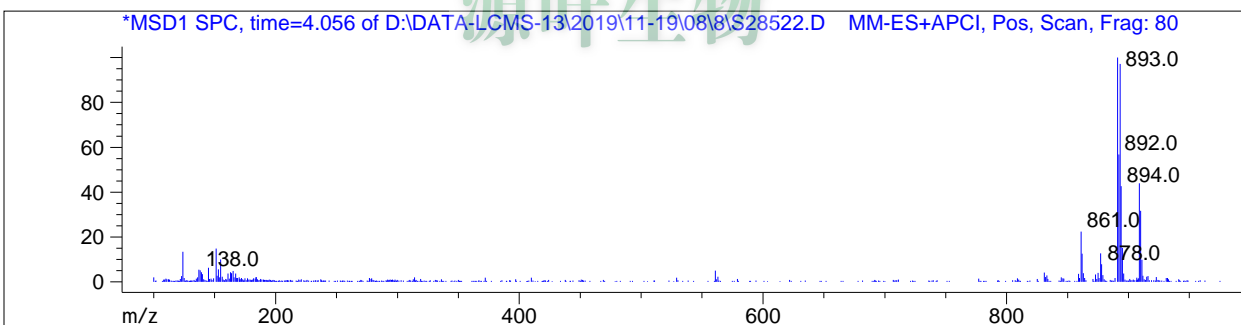
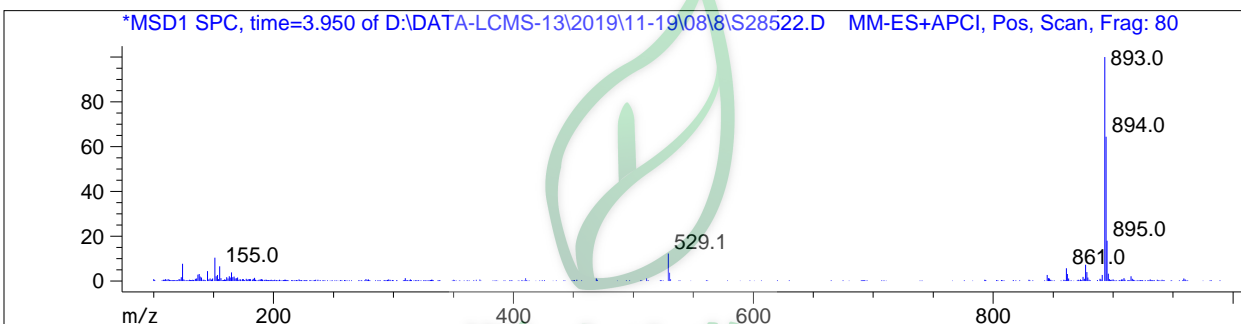
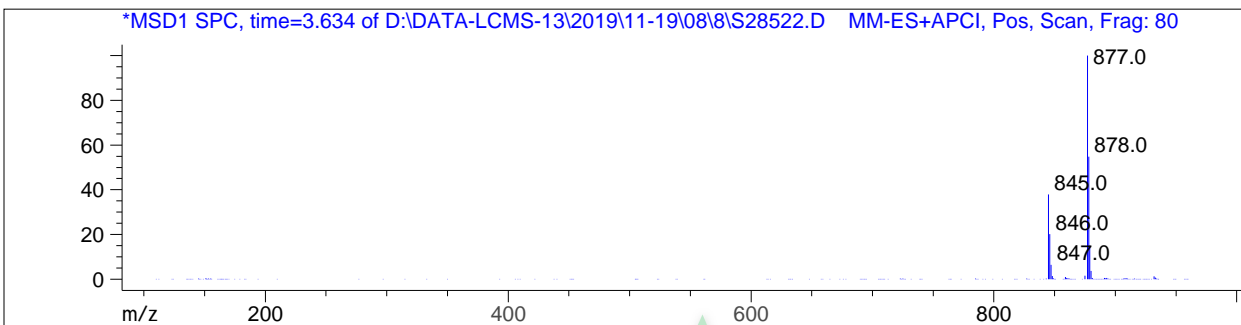
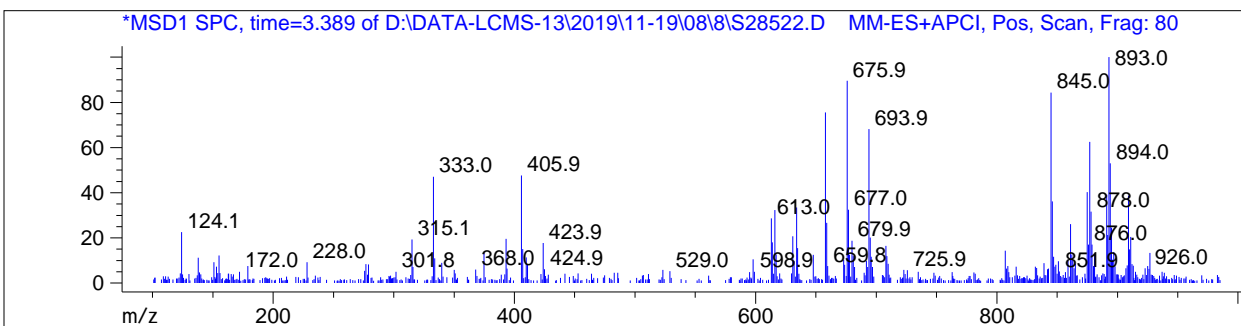
Signal 2: DAD1 B, Sig=254,16 Ref=off

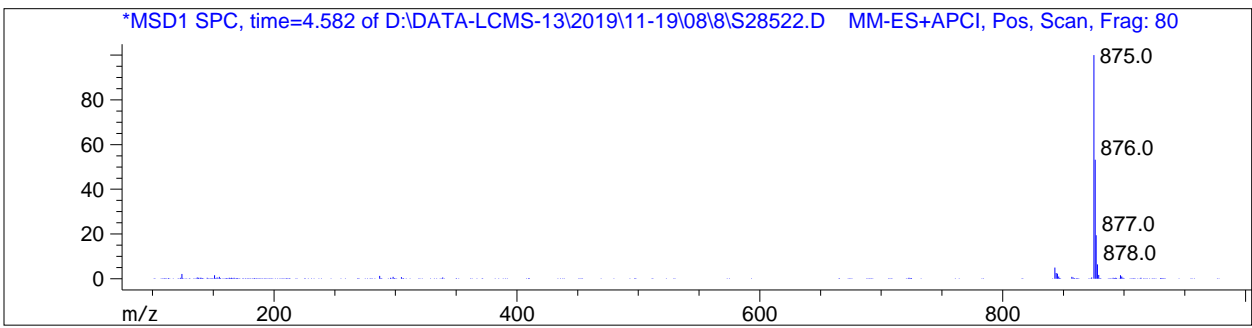
#	R.T.	Type	Height	Height%	Width	Area	Area %
1	2.990	MM	88.892	2.868	0.071	379.565	2.027
2	3.368	MM	34.476	1.112	0.057	117.805	0.629
3	3.598	MM	2632.518	84.938	0.108	17058.418	91.119
4	3.919	MF	34.575	1.116	0.047	97.827	0.523
5	4.025	MF	59.256	1.912	0.054	192.084	1.026
6	4.152	FM	79.598	2.568	0.061	289.180	1.545
7	4.550	MM	170.031	5.486	0.057	586.201	3.131

Signal 3: MSD1 TIC, MS File

#	R.T.	Type	Height	Height%	Width	Area	Area %
1	2.905	MF	34312.113	1.429	0.071	146029.219	0.860
2	3.019	FM	57604.414	2.399	0.066	227141.266	1.337
3	3.395	MM	60968.645	2.539	0.065	236433.359	1.392
4	3.632	MM	1.782e+006	74.219	0.133	1.418e+007	83.446
5	3.953	MF	55668.855	2.318	0.070	234947.063	1.383
6	4.056	MF	69395.414	2.890	0.065	269718.375	1.588
7	4.181	FM	59687.195	2.486	0.106	378594.969	2.228
8	4.582	MM	281434.313	11.720	0.078	1.320e+006	7.768







*** End of Report ***



源叶生物