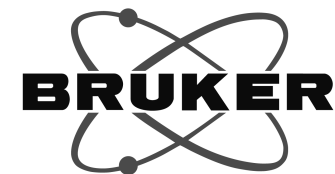
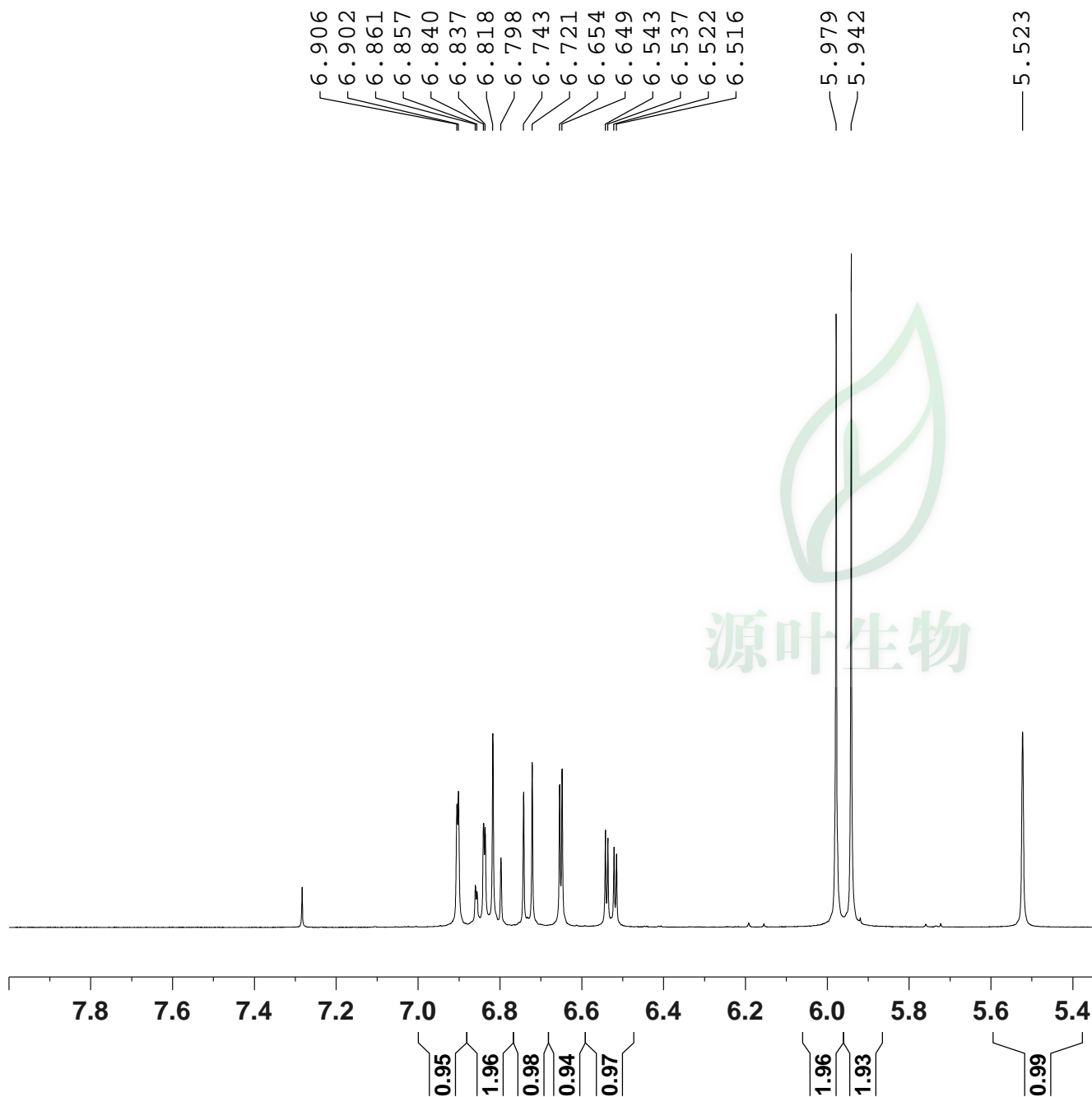


Current Data Parameters
 NAME 9051404
 EXPNO 11
 PROCNO 1

F2 - Acquisition Parameters
 Date_ 20180516
 Time 14.35
 INSTRUM spect
 PROBHD 5 mm PABBO BB/
 PULPROG zg30
 TD 65536
 SOLVENT CDCl3
 NS 2
 DS 2
 SWH 8012.820 Hz
 FIDRES 0.122266 Hz
 AQ 4.0894465 sec
 RG 92
 DW 62.400 usec
 DE 6.50 usec
 TE 301.1 K
 D1 1.00000000 sec
 TD0 1

===== CHANNEL f1 =====
 SFO1 400.1324710 MHz
 NUC1 1H
 P1 14.79 usec
 PLW1 11.50800037 W

F2 - Processing parameters
 SI 65536
 SF 400.1300000 MHz
 WDW EM
 SSB 0
 LB 0.30 Hz
 GB 0
 PC 1.00

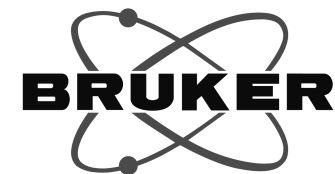


Current Data Parameters
 NAME 9051404
 EXPNO 11
 PROCNO 1

F2 - Acquisition Parameters
 Date_ 20180516
 Time 14.35
 INSTRUM spect
 PROBHD 5 mm PABBO BB/
 PULPROG zg30
 TD 65536
 SOLVENT CDCl3
 NS 2
 DS 2
 SWH 8012.820 Hz
 FIDRES 0.122266 Hz
 AQ 4.0894465 sec
 RG 92
 DW 62.400 usec
 DE 6.50 usec
 TE 301.1 K
 D1 1.00000000 sec
 TD0 1

===== CHANNEL f1 =====
 SF01 400.1324710 MHz
 NUC1 1H
 P1 14.79 usec
 PLW1 11.50800037 W

F2 - Processing parameters
 SI 65536
 SF 400.1300000 MHz
 WDW EM
 SSB 0
 LB 0.30 Hz
 GB 0
 PC 1.00



Current Data Parameters
NAME 9051404
EXPNO 11
PROCNO 1

F2 - Acquisition Parameters
Date_ 20180516
Time 14.35
INSTRUM spect
PROBHD 5 mm PABBO BB/
PULPROG zg30
TD 65536
SOLVENT CDCl3
NS 2
DS 2
SWH 8012.820 Hz
FIDRES 0.122266 Hz
AQ 4.0894465 sec
RG 92
DW 62.400 usec
DE 6.50 usec
TE 301.1 K
D1 1.00000000 sec
TD0 1

===== CHANNEL f1 =====
SF01 400.1324710 MHz
NUC1 1H
P1 14.79 usec
PLW1 11.50800037 W

F2 - Processing parameters
SI 65536
SF 400.1300000 MHz
WDW EM
SSB 0
LB 0.30 Hz
GB 0
PC 1.00

