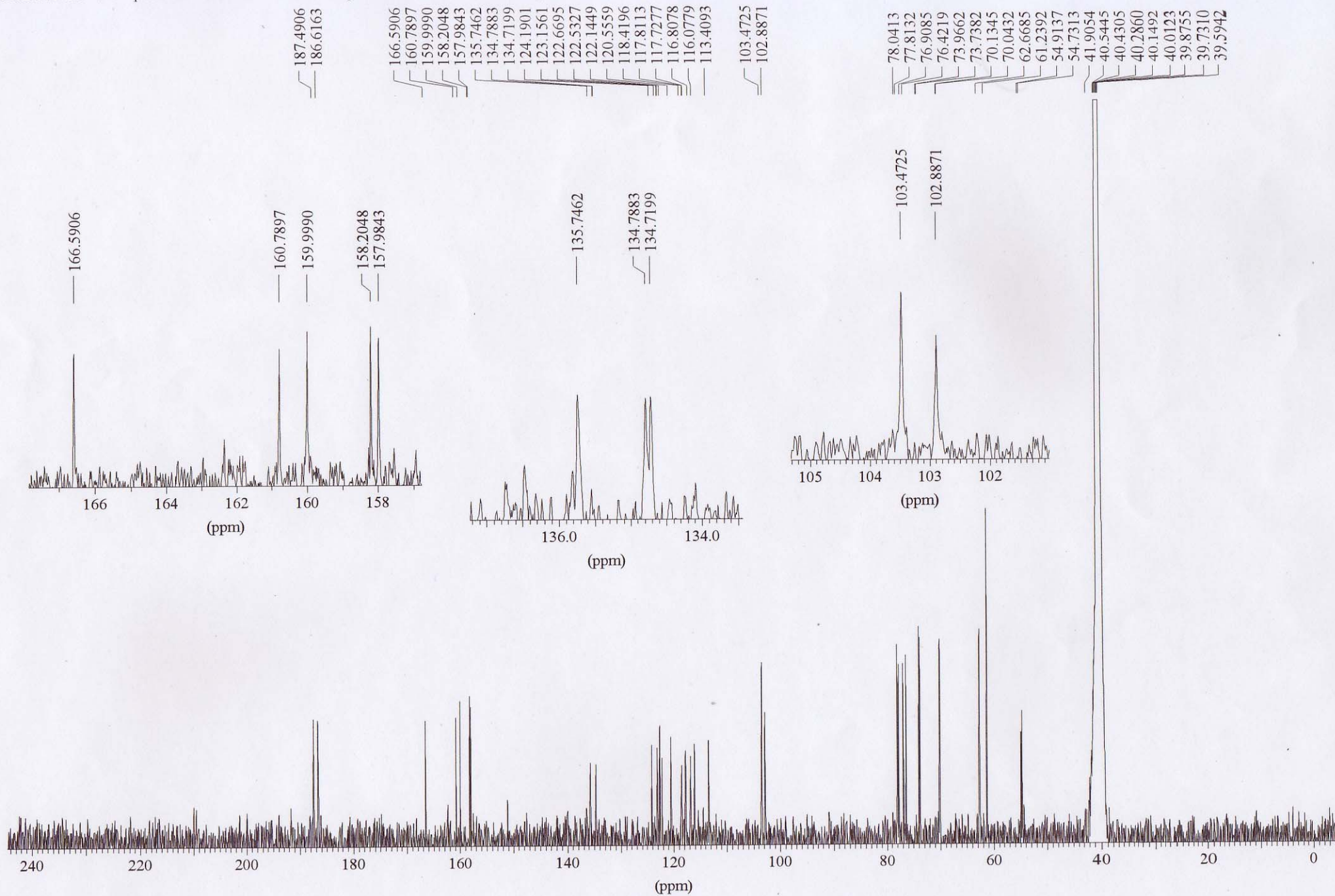
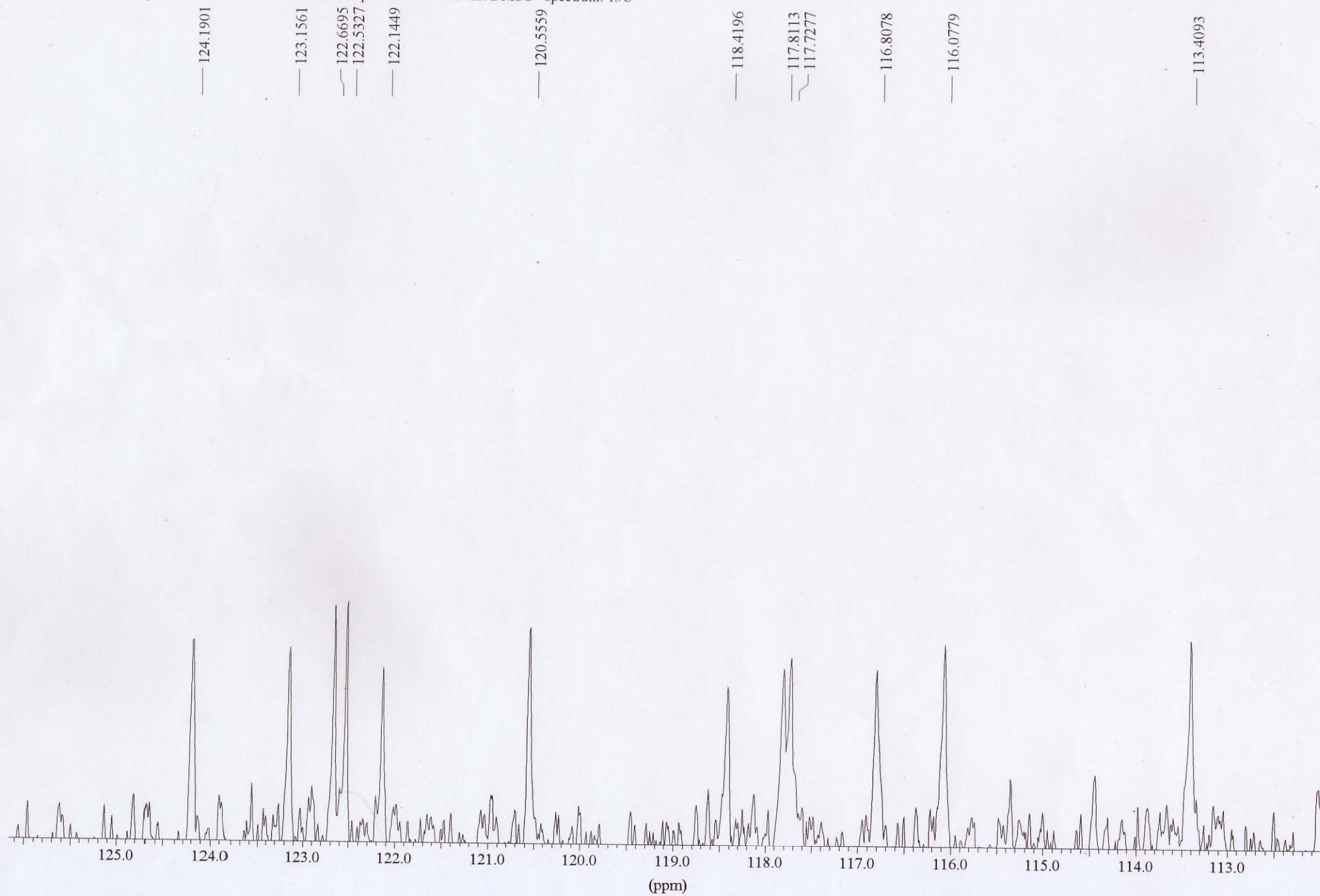


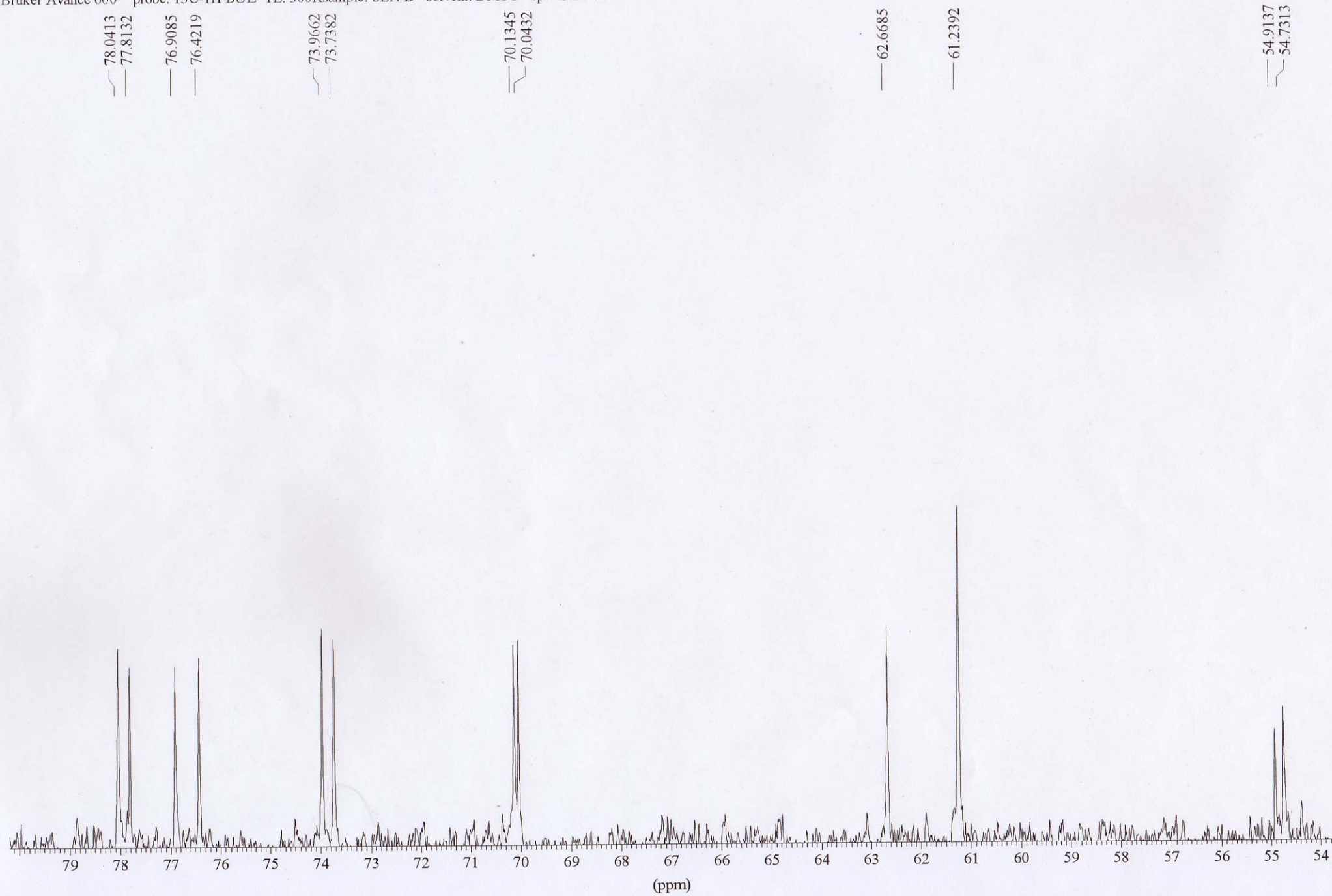
Bruker Avance 600 probe: 13C-1H DUL TE: 300K sample: SEN-D solvent: DMSO spectrum: 13C

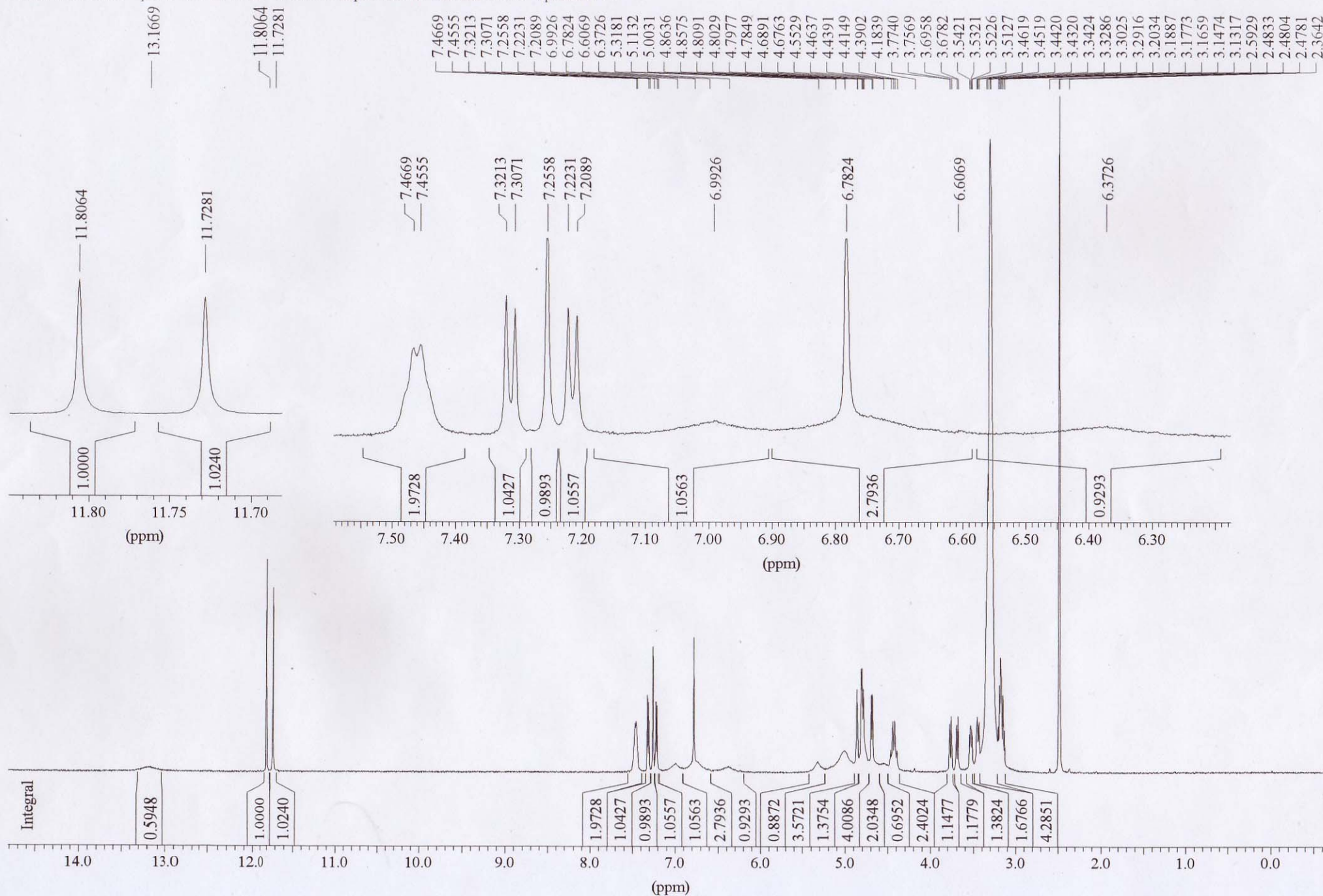


Bruker Avance 600 probe: ^{13}C -1H DUL TE: 300K sample: SEN-D solvent: DMSO spectrum: ^{13}C

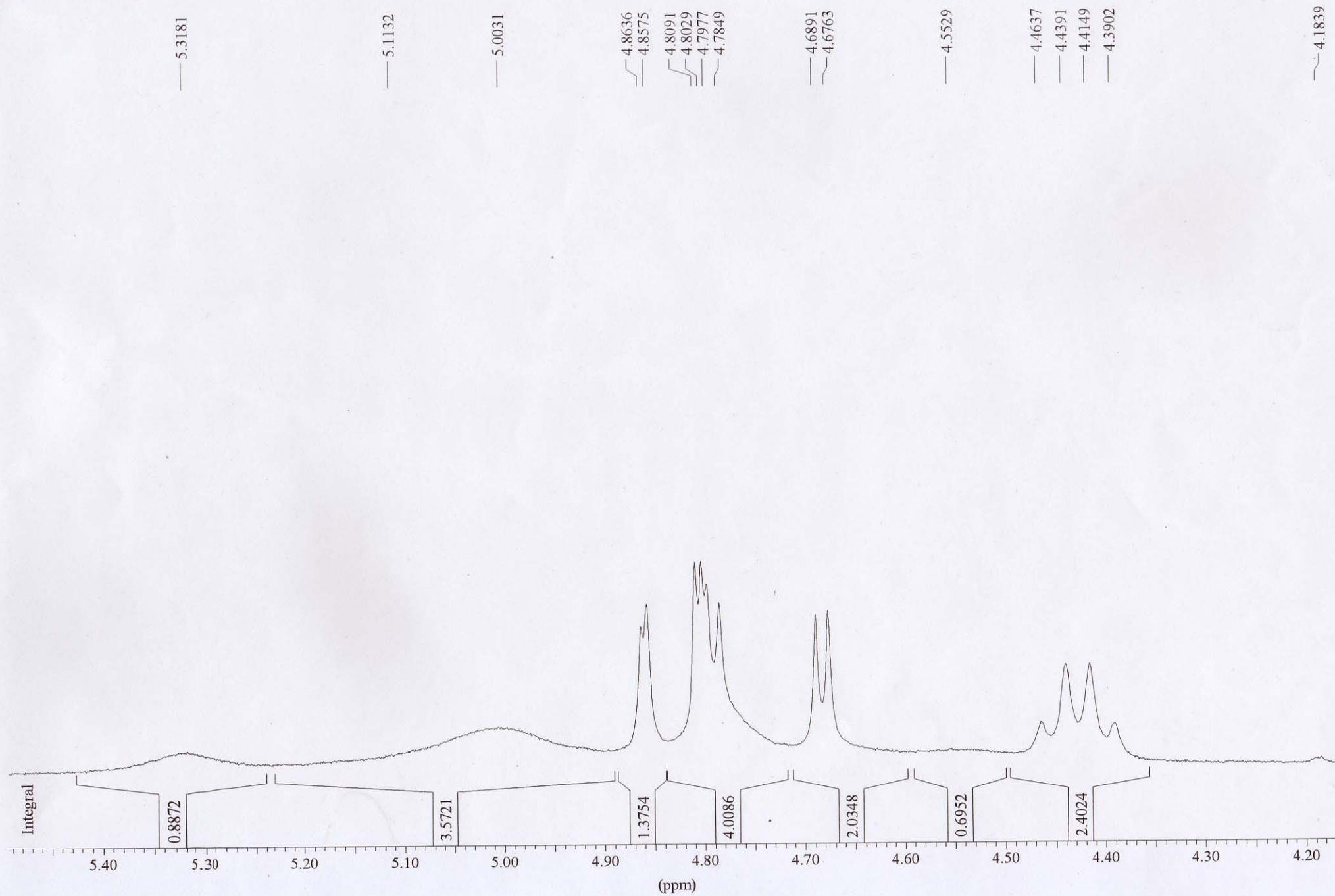


Bruker Avance 600 probe: 13C-1H DUL TE: 300K sample: SEN-D solvent: DMSO spectrum: 13C





Bruker Avance 600 probe: 13C-1HDUL TE: 300K sample: SEN-D solvent: DMSO spectrum: 1H



Bruker Avance 600 probe: ^{13}C - ^1H DUL TE: 300K sample: SEN-D solvent: DMSO spectrum: ^1H

