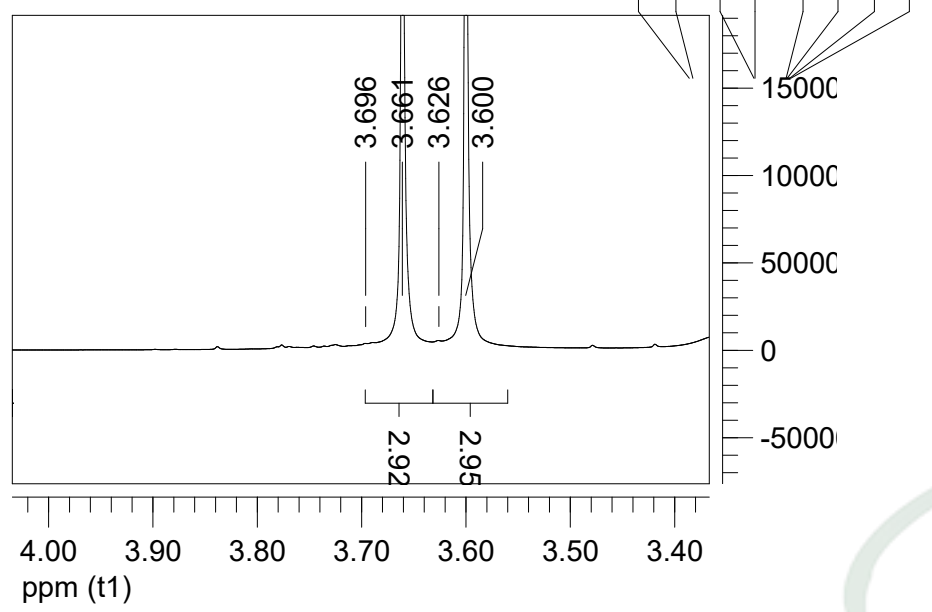


205168



6.647  
6.626  
6.269  
6.263  
6.080  
6.074  
6.059  
6.053

4.649

3.696  
3.661  
3.626  
3.600  
3.362

2.503  
2.499  
2.495

0.00000

源叶生物

1.04  
1.00  
1.01

2.01

2.95  
2.95

10.0

5.0

0.0

ppm (t1)