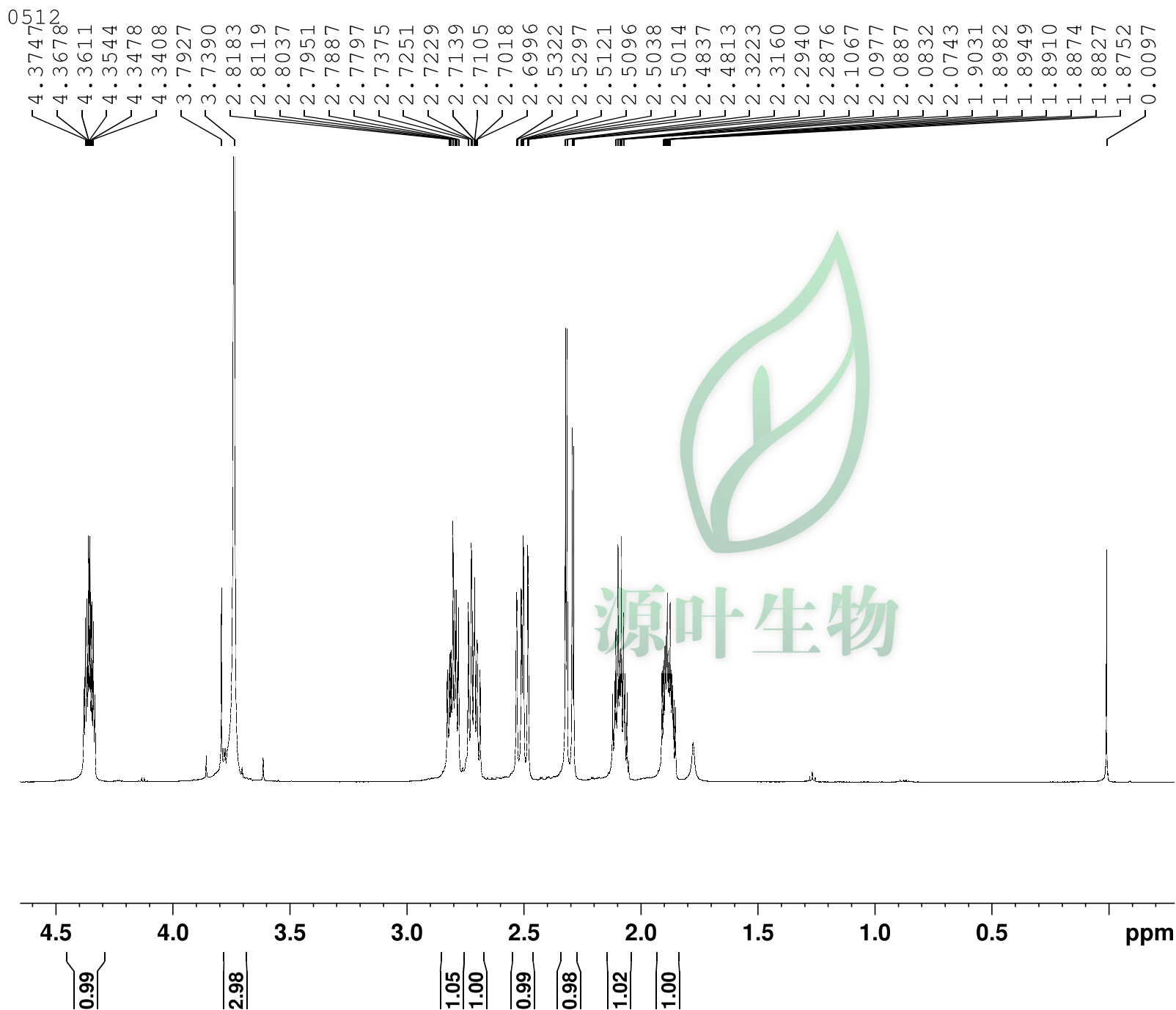


Current Data Parameters  
 NAME May17-2014  
 EXPNO 200  
 PROCNO 1

F2 - Acquisition Parameters  
 Date\_ 20140517  
 Time 17.43  
 INSTRUM spect  
 PROBHD 5 mm PABBO BB/  
 PULPROG zg30  
 TD 65536  
 SOLVENT CDCl3  
 NS 16  
 DS 2  
 SWH 12019.230 Hz  
 FIDRES 0.183399 Hz  
 AQ 2.7262976 sec  
 RG 30.94  
 DW 41.600 usec  
 DE 6.50 usec  
 TE 298.2 K  
 D1 1.00000000 sec  
 TD0 1

===== CHANNEL f1 =====  
 SFO1 600.2037065 MHz  
 NUC1 1H  
 P1 10.75 usec  
 PLW1 26.00200081 W

F2 - Processing parameters  
 SI 65536  
 SF 600.2000000 MHz  
 WDW EM  
 SSB 0  
 LB 0.30 Hz  
 GB 0  
 PC 1.00



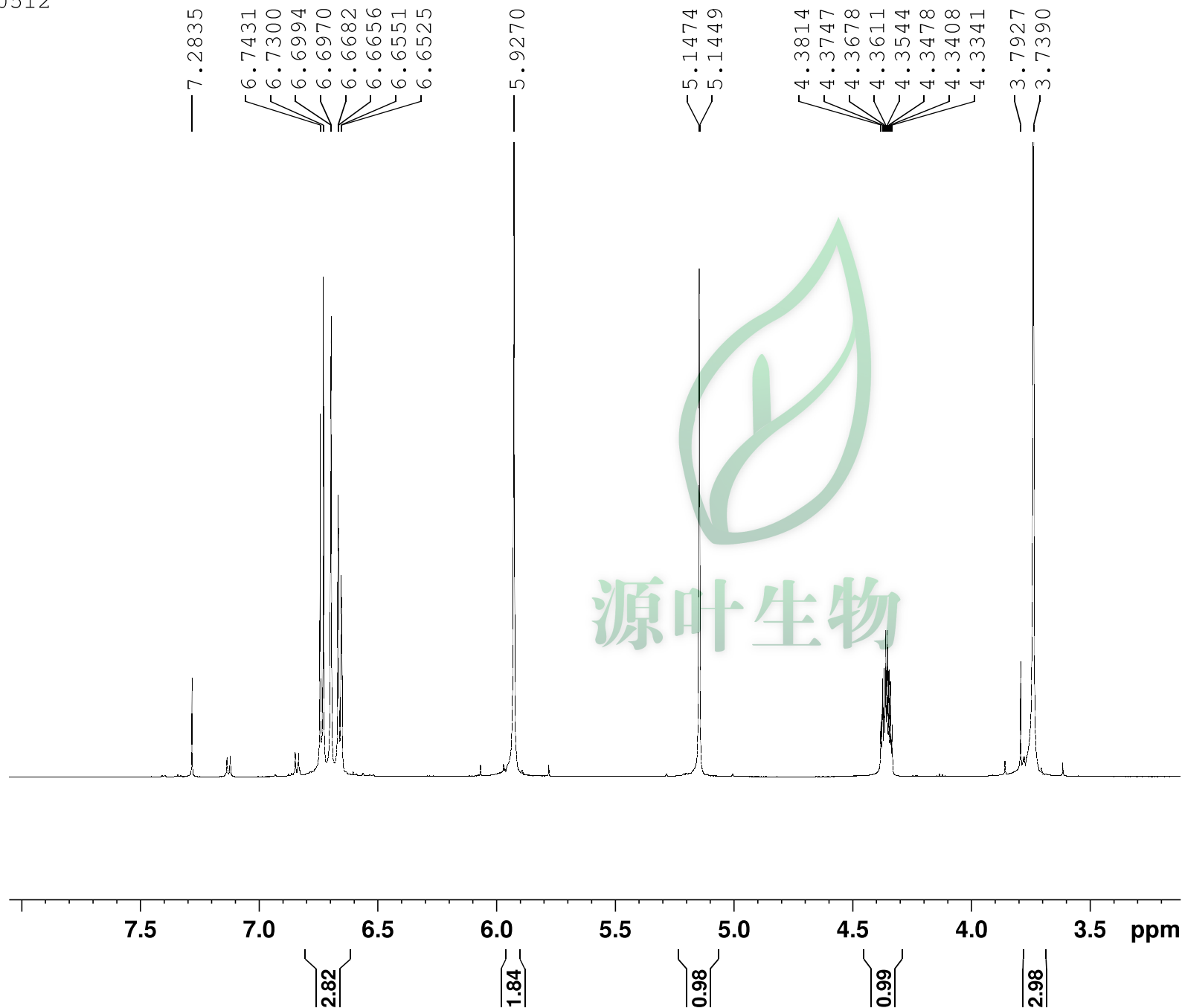
Current Data Parameters  
 NAME May17-2014  
 EXPNO 200  
 PROCNO 1

F2 - Acquisition Parameters  
 Date\_ 20140517  
 Time 17.43  
 INSTRUM spect  
 PROBHD 5 mm PABBO BB/  
 PULPROG zg30  
 TD 65536  
 SOLVENT CDCl<sub>3</sub>  
 NS 16  
 DS 2  
 SWH 12019.230 Hz  
 FIDRES 0.183399 Hz  
 AQ 2.7262976 sec  
 RG 30.94  
 DW 41.600 usec  
 DE 6.50 usec  
 TE 298.2 K  
 D1 1.00000000 sec  
 TD0 1

===== CHANNEL f1 =====  
 SFO1 600.2037065 MHz  
 NUC1 <sup>1</sup>H  
 P1 10.75 usec  
 PLW1 26.00200081 W

F2 - Processing parameters  
 SI 65536  
 SF 600.2000000 MHz  
 WDW EM  
 SSB 0  
 LB 0.30 Hz  
 GB 0  
 PC 1.00

0512



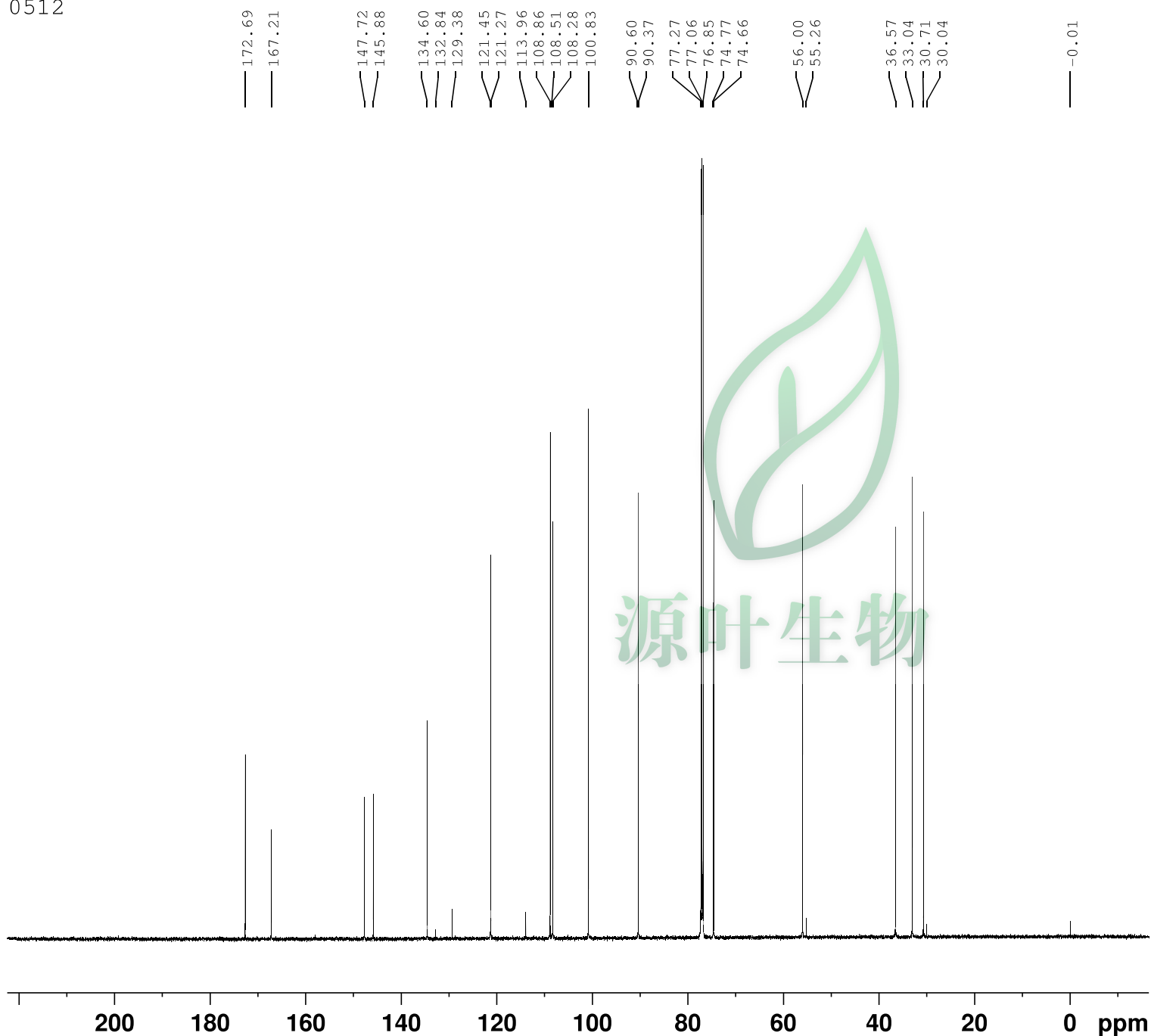
Current Data Parameters  
NAME May17-2014  
EXPNO 200  
PROCNO 1

F2 - Acquisition Parameters  
Date\_ 20140517  
Time 17.43  
INSTRUM spect  
PROBHD 5 mm PABBO BB/  
PULPROG zg30  
TD 65536  
SOLVENT CDCl3  
NS 16  
DS 2  
SWH 12019.230 Hz  
FIDRES 0.183399 Hz  
AQ 2.7262976 sec  
RG 30.94  
DW 41.600 usec  
DE 6.50 usec  
TE 298.2 K  
D1 1.00000000 sec  
TD0 1

===== CHANNEL f1 =====  
SFO1 600.2037065 MHz  
NUC1 1H  
P1 10.75 usec  
PLW1 26.00200081 W

F2 - Processing parameters  
SI 65536  
SF 600.2000000 MHz  
WDW EM  
SSB 0  
LB 0.30 Hz  
GB 0  
PC 1.00

0512



Current Data Parameters  
NAME May17-2014  
EXPNO 201  
PROCNO 1

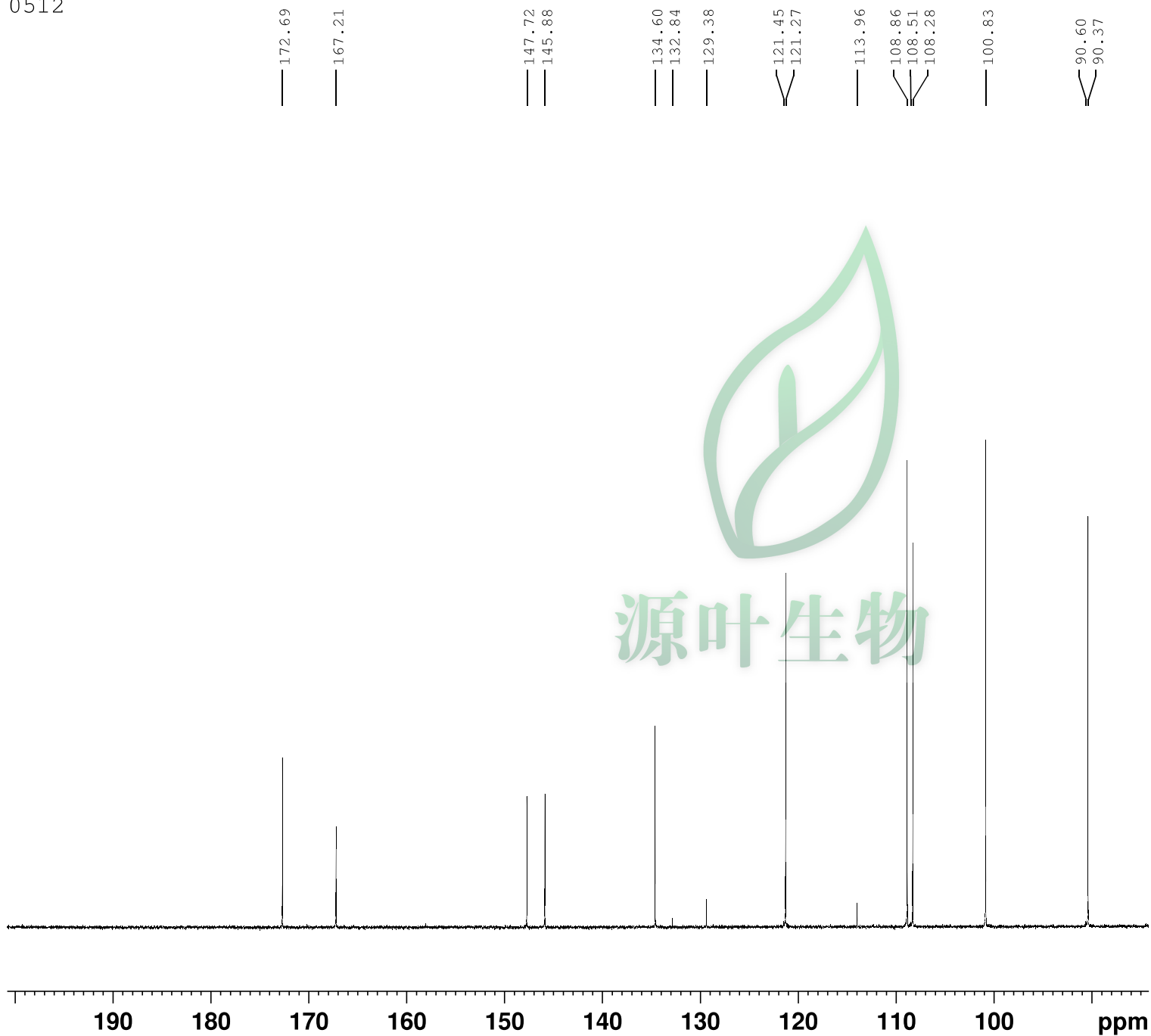
F2 - Acquisition Parameters  
Date\_ 20140517  
Time 18.35  
INSTRUM spect  
PROBHD 5 mm PABBO BB/  
PULPROG zgpg30  
TD 65536  
SOLVENT CDCl3  
NS 2048  
DS 4  
SWH 36057.691 Hz  
FIDRES 0.550197 Hz  
AQ 0.9087659 sec  
RG 2050  
DW 13.867 usec  
DE 6.50 usec  
TE 299.5 K  
D1 2.00000000 sec  
D11 0.03000000 sec  
TD0 2

===== CHANNEL f1 =====  
SFO1 150.9359548 MHz  
NUC1 13C  
P1 11.75 usec  
PLW1 69.50199890 W

===== CHANNEL f2 =====  
SFO2 600.2024008 MHz  
NUC2 1H  
CPDPRG[2] waltz16  
PCPD2 70.00 usec  
PLW2 26.00200081 W  
PLW12 0.61322999 W  
PLW13 0.30048001 W

F2 - Processing parameters  
SI 32768  
SF 150.9204100 MHz  
WDW EM  
SSB 0  
LB 1.00 Hz  
GB 0  
PC 1.40

0512



Current Data Parameters  
NAME May17-2014  
EXPNO 201  
PROCNO 1

F2 - Acquisition Parameters  
Date\_ 20140517  
Time 18.35  
INSTRUM spect  
PROBHD 5 mm PABBO BB/  
PULPROG zgpg30  
TD 65536  
SOLVENT CDC13  
NS 2048  
DS 4  
SWH 36057.691 Hz  
FIDRES 0.550197 Hz  
AQ 0.9087659 sec  
RG 2050  
DW 13.867 usec  
DE 6.50 usec  
TE 299.5 K  
D1 2.00000000 sec  
D11 0.03000000 sec  
TD0 2

===== CHANNEL f1 =====  
SFO1 150.9359548 MHz  
NUC1 13C  
P1 11.75 usec  
PLW1 69.50199890 W

===== CHANNEL f2 =====  
SFO2 600.2024008 MHz  
NUC2 1H  
CPDPRG[2] waltz16  
PCPD2 70.00 usec  
PLW2 26.00200081 W  
PLW12 0.61322999 W  
PLW13 0.30048001 W

F2 - Processing parameters  
SI 32768  
SF 150.9204100 MHz  
WDW EM  
SSB 0  
LB 1.00 Hz  
GB 0  
PC 1.40