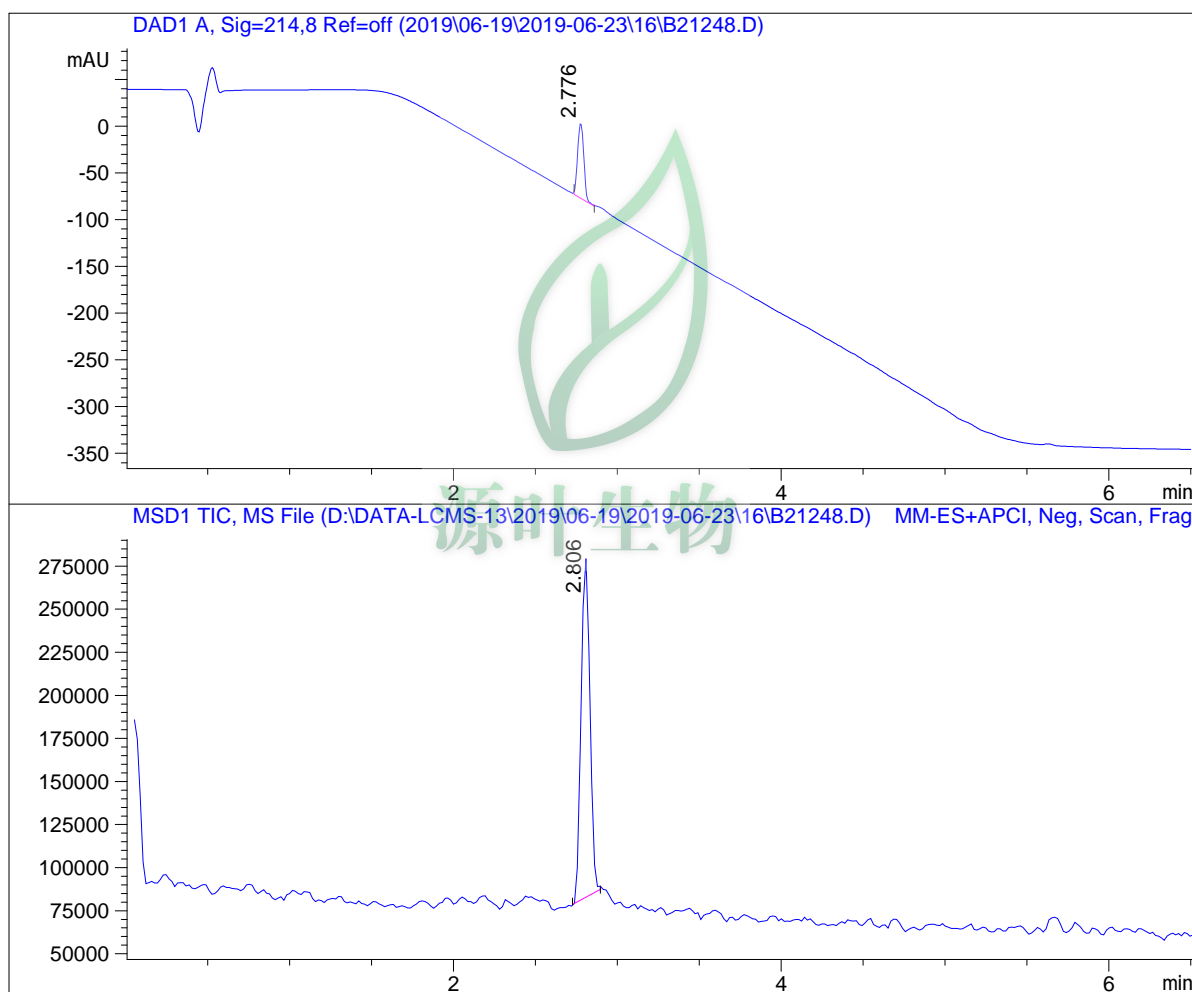


LC - MS Report

Sample Name : B21248
 Data File 2019\06-19\2019-06-23\16\B21248.D
 Injection Date : Sun, 23. Jun. 2019 Inj. Vol. : 5ul
 Acq Operator : LCMS-13 Location : Vial 72
 Acq. Method N-05-95-C2.M
 Sample Info.: column:C18;column size:4.6*30mm ;mobile phase:B(ACN),
 A(0.02%NH4Ac); gradient(B%):as Acq.Method above



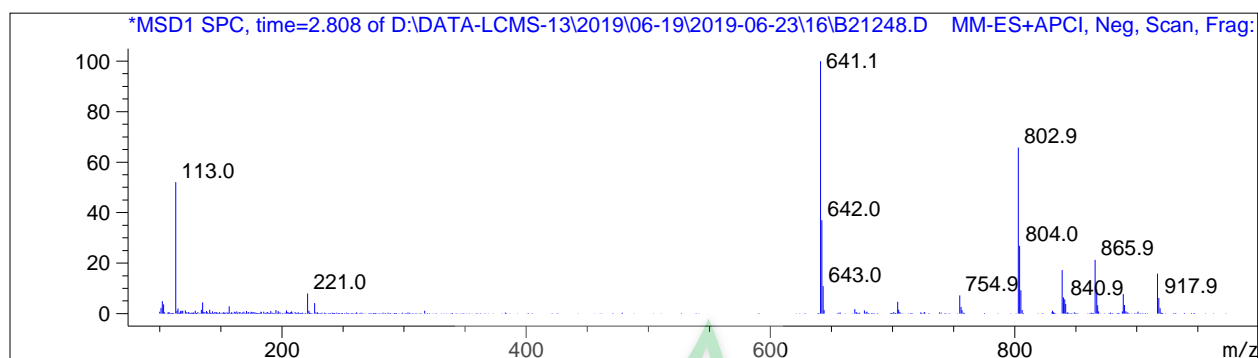
Integration Results

Signal 1: DAD1 A, Sig=214,8 Ref=off

#	R.T.	Type	Height	Height%	Width	Area	Area %
1	2.776	BB	80.268	100.000	0.043	210.274	100.000

Signal 2: MSD1 TIC, MS File

#	R.T.	Type	Height	Height%	Width	Area	Area %
1	2.806	MM	201230.453	100.000	0.061	739265.438	100.000



*** End of Report ***



源叶生物