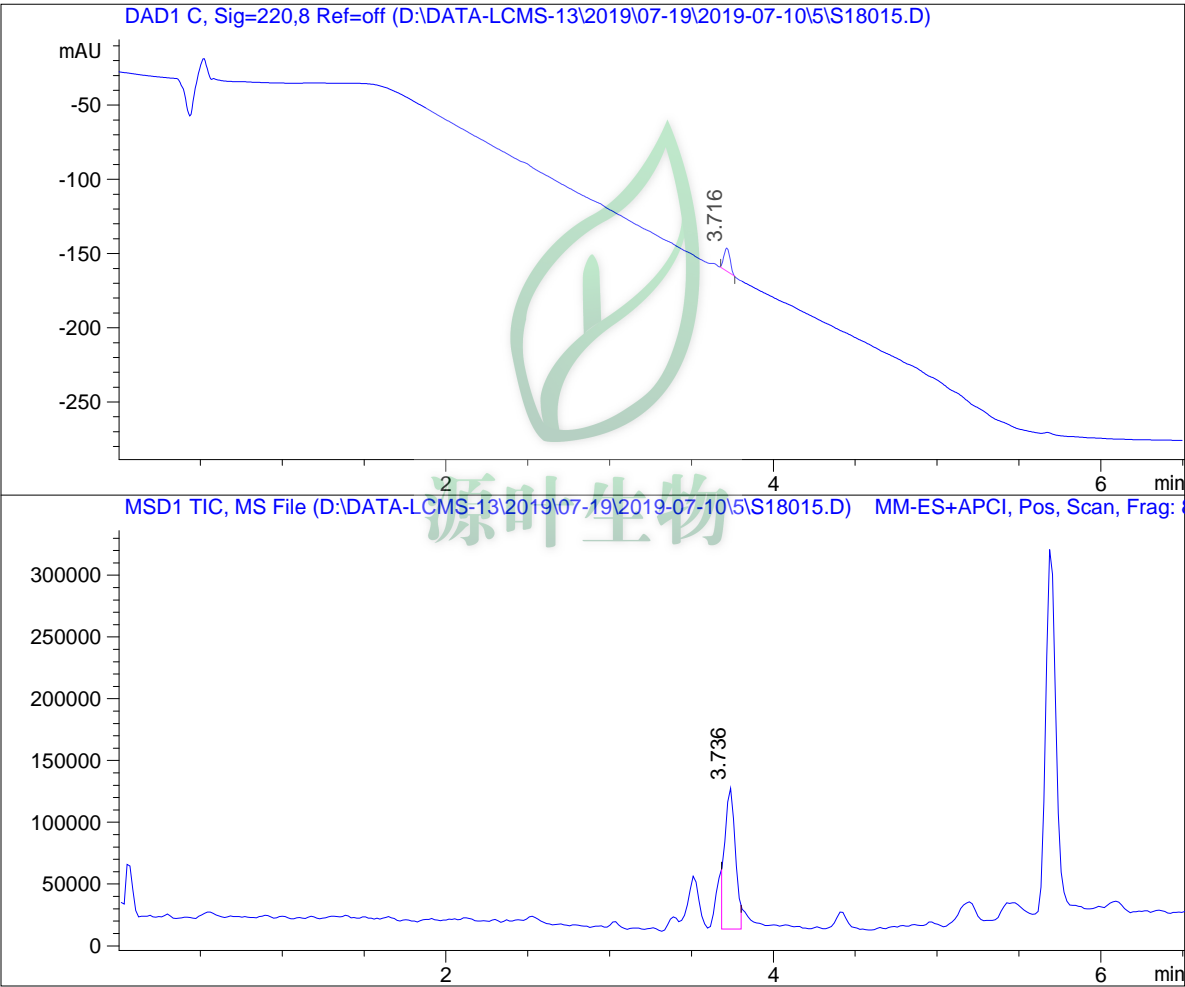


LC - MS Report

Sample Name : S18015
Data File : 2019\07-19\2019-07-10\5\S18015.D
Injection Date : Wed, 10. Jul. 2019 Inj. Vol. : 5ul
Acq Operator : LCMS-13 Location : Vial 22
Acq. Method : 2019\07-19\2019-07-10\5\P-05-95-C2.M
Sample Info.: column:C18;column size:4.6*50mm ;mobile phase:B(ACN),
A(0.02%NH4Ac); gradient(B%):as Acq.Method above



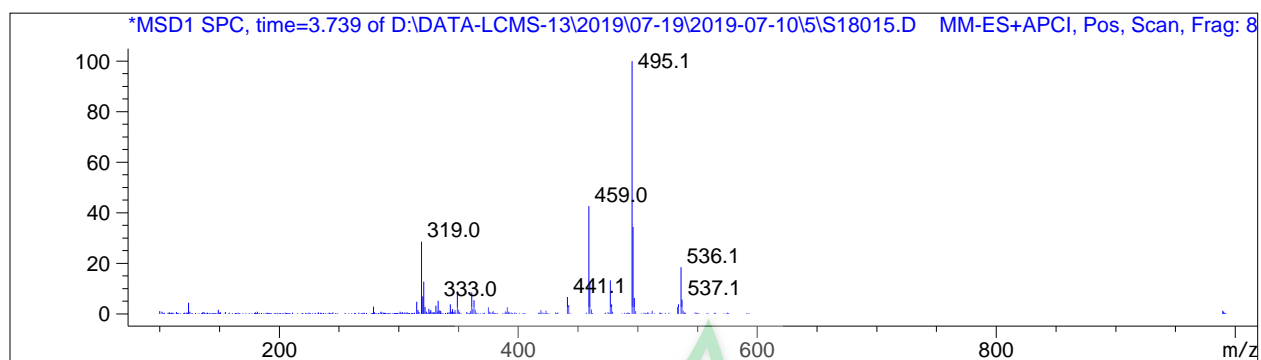
=====
Integration Results
=====

Signal 1: DAD1 C, Sig=220,8 Ref=off

#	R.T.	Type	Height	Height%	Width	Area	Area %
1	3.716	MM	15.668	100.000	0.043	40.432	100.000

Signal 2: MSD1 TIC, MS File

#	R.T.	Type	Height	Height%	Width	Area	Area %
1	3.736	MM	116050.063	100.000	0.071	495107.875	100.000



*** End of Report ***



源叶生物