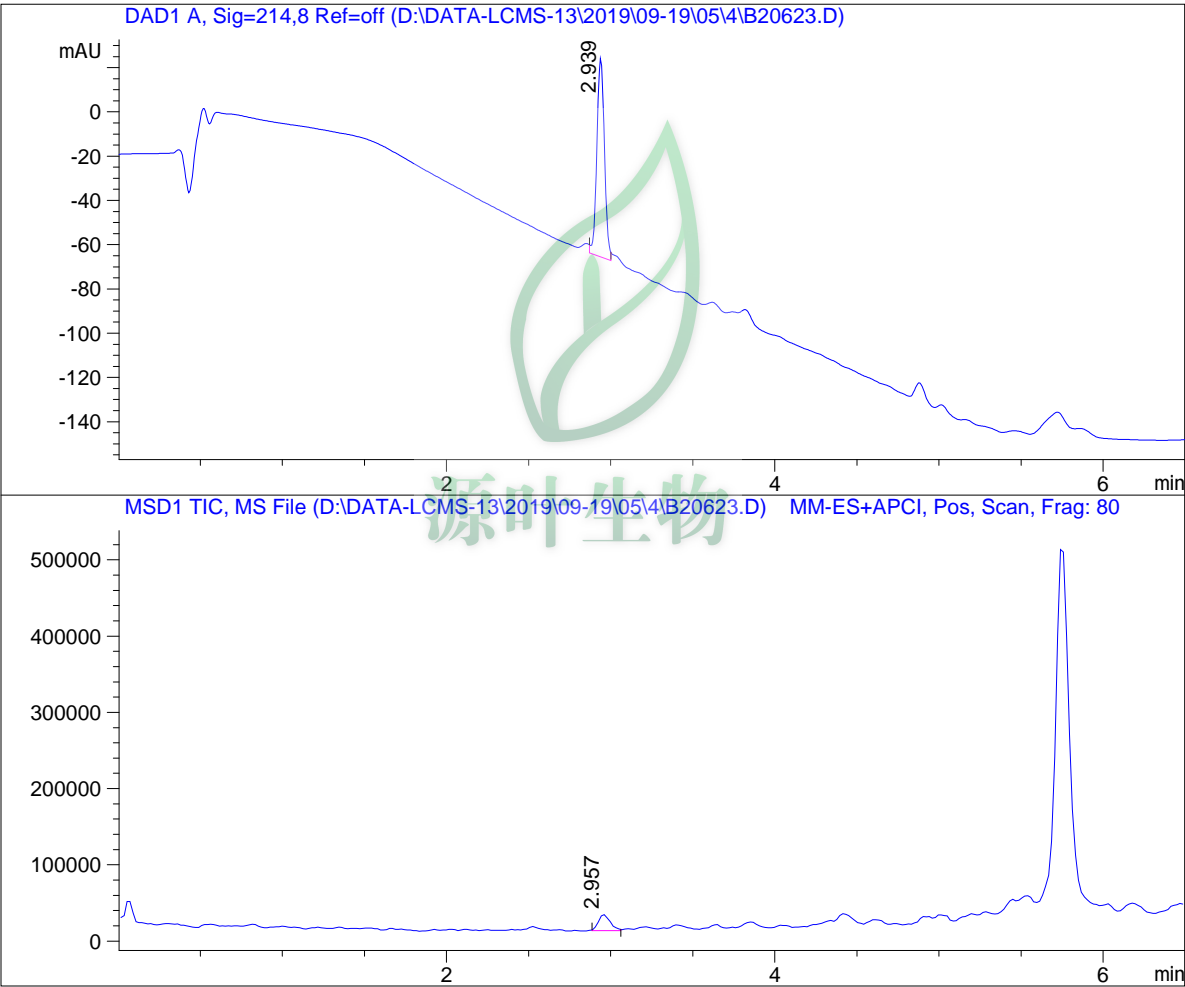


LC - MS Report

Sample Name : B20623
Data File : D:\DATA-LCMS-13\2019\09-19\05\4\B20623.D
Injection Date : Thu, 5. Sep. 2019 Inj. Vol. : 5ul
Acq Operator : LCMS-13 Location : Vial 42
Acq. Method : D:\data-lcms-13\2019\09-19\05\4\P-05-95-100-1500.M
Method Info. : column:C18;column size:4.6*50mm ;mobile phase:B(ACN),
A(0.02%NH4Ac); gradient(B%):as Acq.Method above



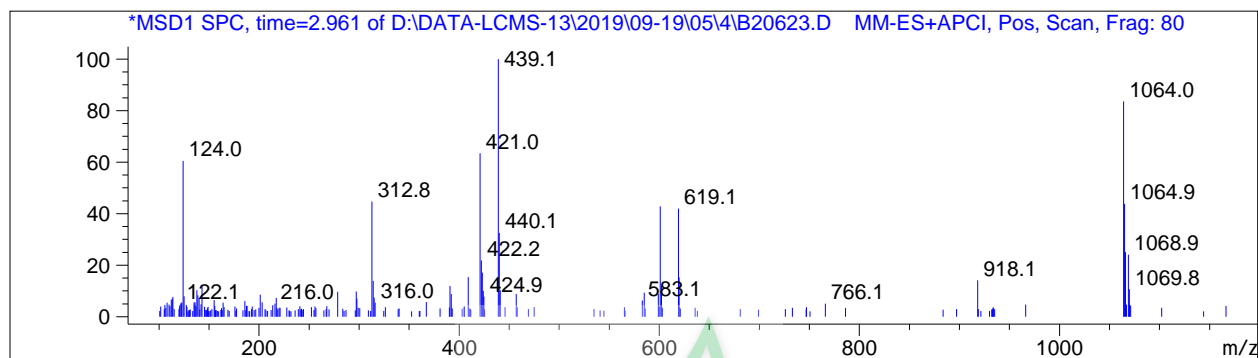
=====
Integration Results
=====

Signal 1: DAD1 A, Sig=214,8 Ref=off

#	R.T.	Type	Height	Height%	Width	Area	Area %
1	2.939	MF	89.872	100.000	0.053	287.162	100.000

Signal 2: MSD1 TIC, MS File

#	R.T.	Type	Height	Height%	Width	Area	Area %
1	2.957	MM	21138.381	100.000	0.082	104233.570	100.000



*** End of Report ***



源叶生物