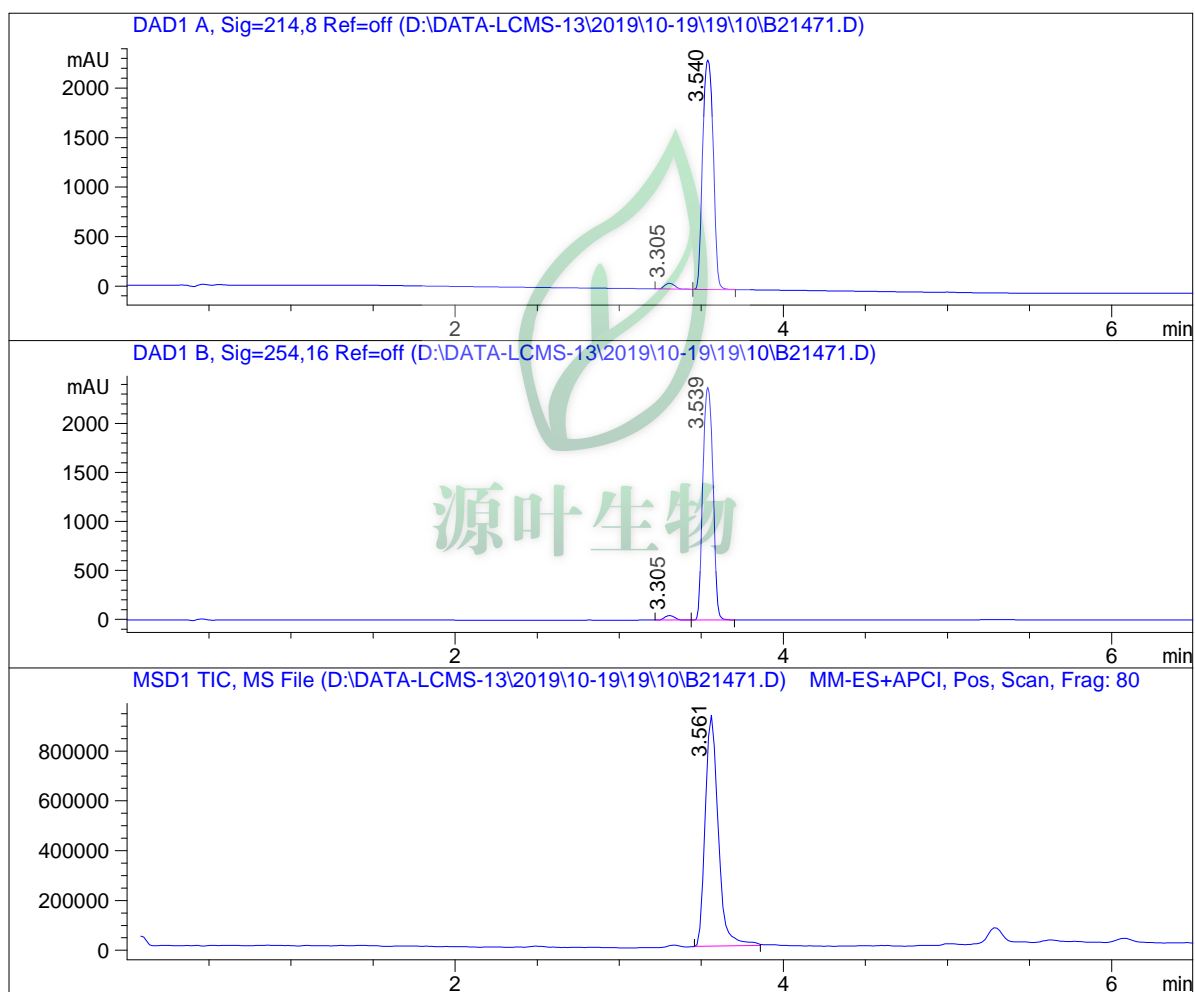


# LC - MS Report

Sample Name : B21471  
Data File : D:\DATA-LCMS-13\2019\10-19\19\10\B21471.D  
Injection Date : Sun, 20. Oct. 2019 Inj. Vol. : 5ul  
Acq Operator : LCMS-13 Location : Vial 14  
Acq. Method : D:\data-lcms-13\2019\10-19\19\10\P-05-95-C2.M  
Method Info. : column:C18;column size:4.6\*50mm ;mobile phase:B(ACN),  
A(0.02%NH4Ac); gradient(B%):as Acq.Method above



## Integration Results

Signal 1: DAD1 A, Sig=214,8 Ref=off

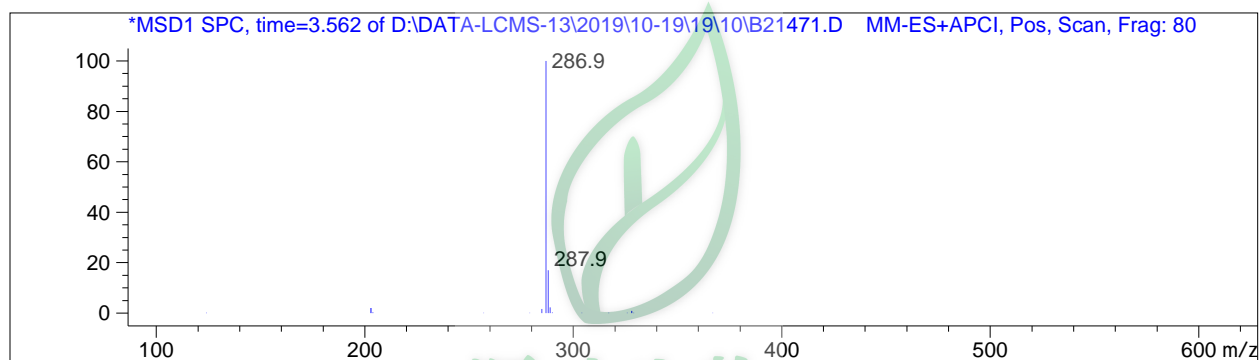
#	R.T.	Type	Height	Height%	Width	Area	Area %
1	3.305	BV	57.247	2.411	0.072	243.928	2.296
2	3.540	VB	2317.117	97.589	0.074	10380.664	97.704

Signal 2: DAD1 B, Sig=254,16 Ref=off

#	R.T.	Type	Height	Height%	Width	Area	Area %
1	3.305	BV	45.972	1.899	0.072	196.395	1.888
2	3.539	VB	2375.244	98.101	0.072	10207.879	98.112

Signal 3: MSD1 TIC, MS File

#	R.T.	Type	Height	Height%	Width	Area	Area %
1	3.561	MM	938143.563	100.000	0.091	5.100e+006	100.000



\*\*\* End of Report \*\*\*