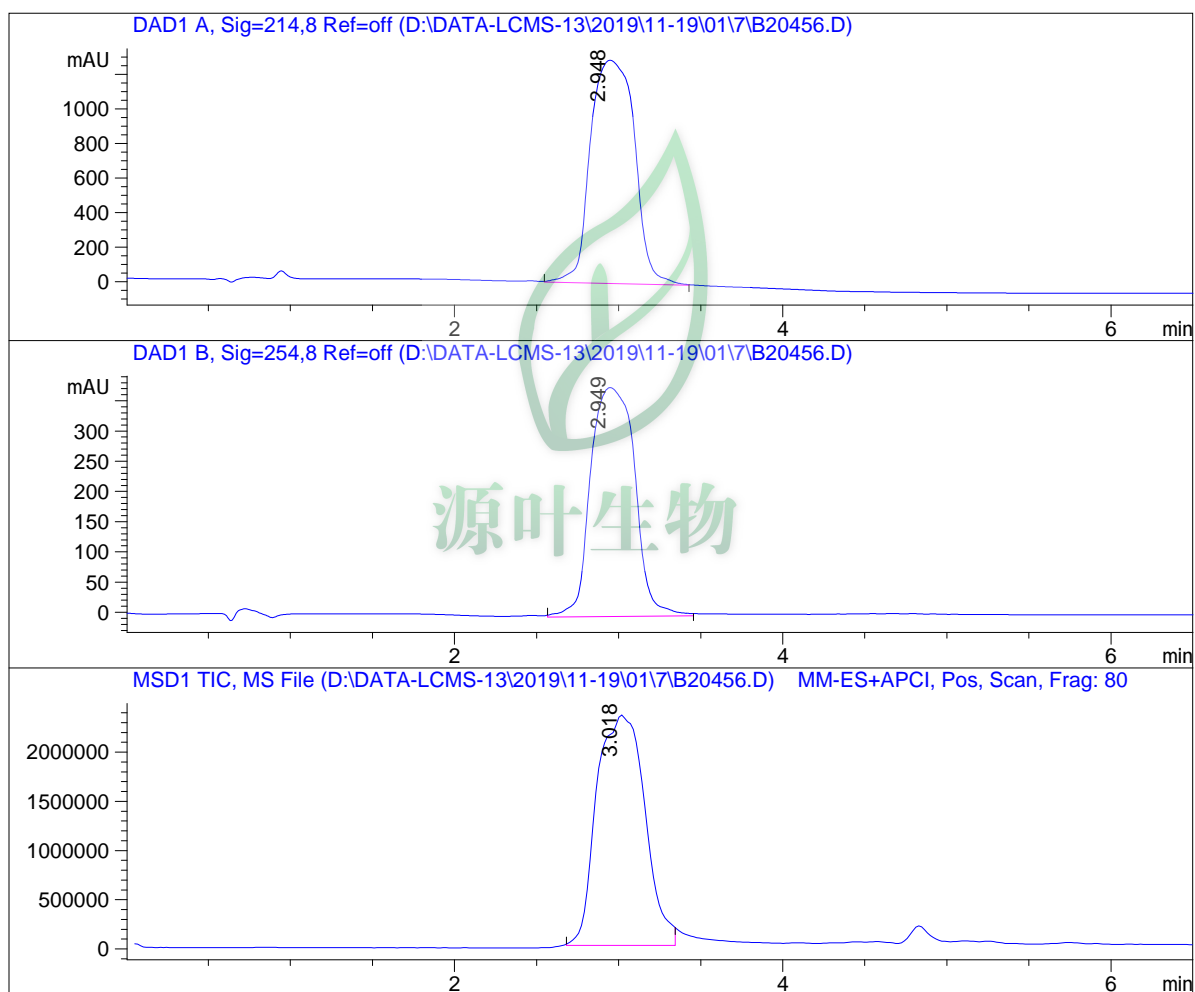


LC - MS Report

Sample Name : B20456
 Data File : D:\DATA-LCMS-13\2019\11-19\01\7\B20456.D
 Injection Date : Sat, 2. Nov. 2019 Inj. Vol. : 5ul
 Acq Operator : LCMS-13 Location : Vial 63
 Acq. Method : D:\data-lcms-13\2019\11-19\01\7\P-05-95.M
 Method Info. : column:C18;column size:4.6*50mm ;mobile phase:B(ACN),
 A(0.02%NH4Ac); gradient(B%):as Acq.Method above



Integration Results

Signal 1: DAD1 A, Sig=214,8 Ref=off

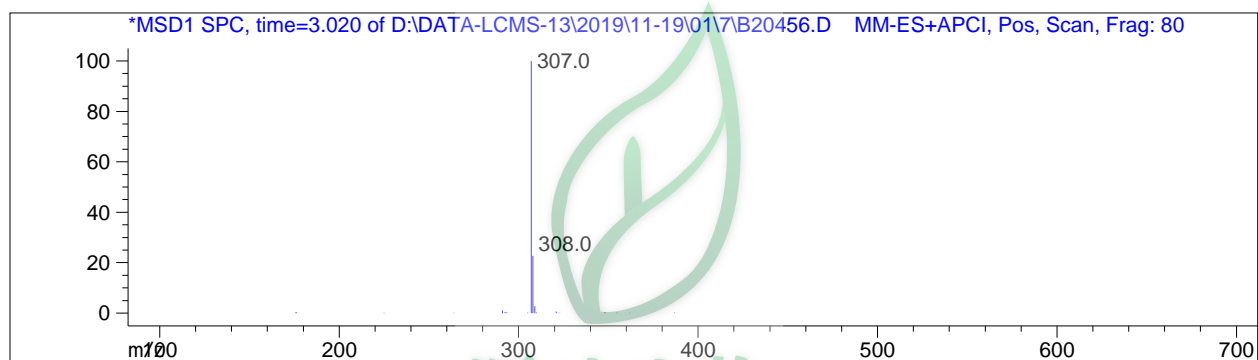
#	R.T.	Type	Height	Height%	Width	Area	Area %
1	2.948	MM	1291.580	100.000	0.311	24068.492	100.000

Signal 2: DAD1 B, Sig=254,8 Ref=off

#	R.T.	Type	Height	Height%	Width	Area	Area %
1	2.949 MM		378.880	100.000	0.311	7072.042	100.000

Signal 3: MSD1 TIC, MS File

#	R.T.	Type	Height	Height%	Width	Area	Area %
1	3.018 MM		2.346e+006	100.000	0.339	4.775e+007	100.000



*** End of Report ***