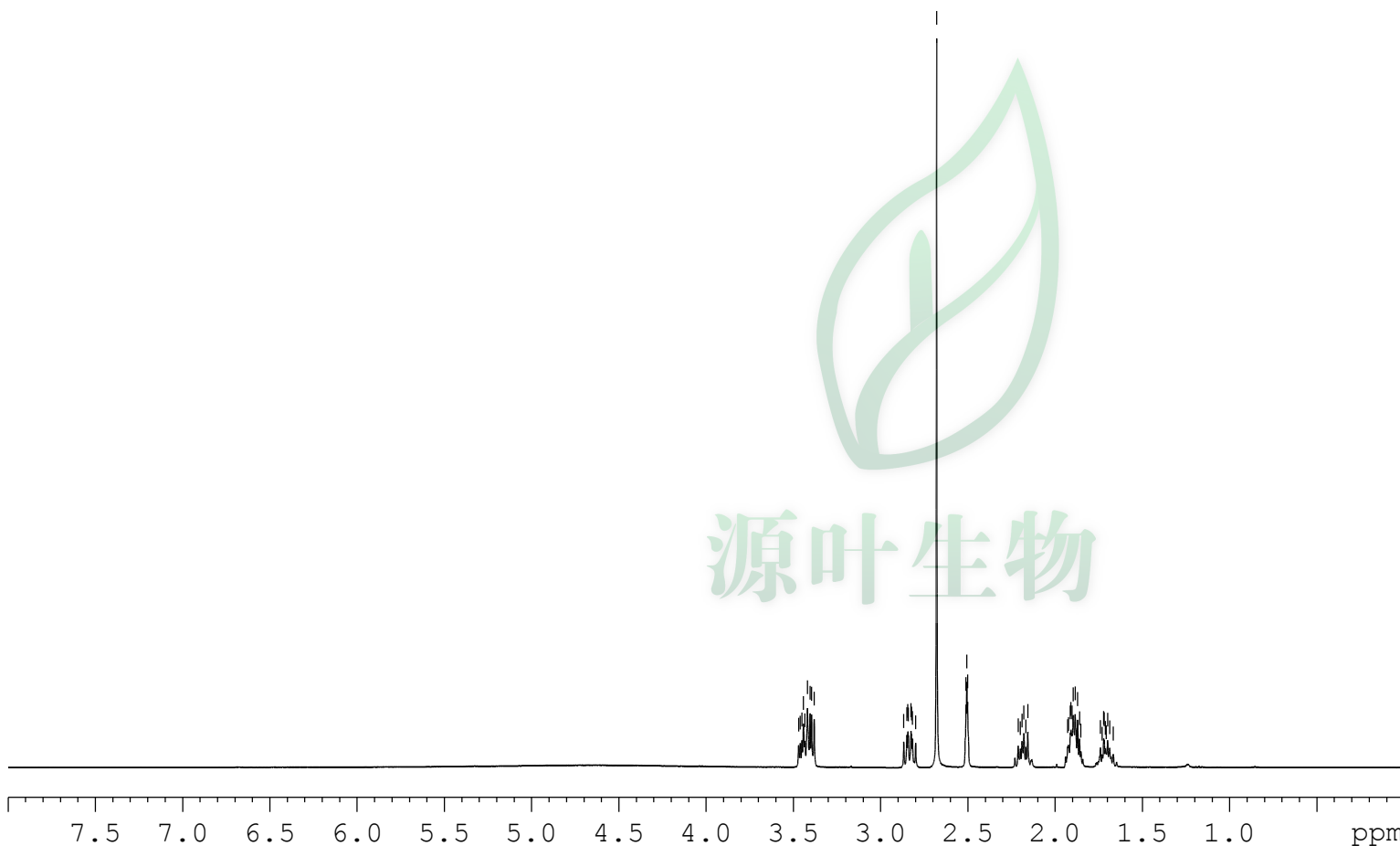


3.468
3.459
3.450
3.441
3.433
3.418
3.403
3.394
3.379
3.366
2.848
2.842
2.840
2.825
2.822
2.816
2.798
2.678
2.509
2.505
2.500
2.210
2.198
2.189
2.178
2.166
2.155
1.927
1.923
1.912
1.908
1.903
1.896
1.884
1.870
1.859
1.851
1.739
1.720
1.717
1.710
1.706
1.698
1.686
1.666

NAME S72534
EXPNO 400
PROCNO 1
Date_ 20200313
Time_ 20.13
INSTRUM spect
PROBHD 5 mm

PULPROG zg30
TD 65536
SOLVENT DMSO
NS 8
DS 0
SWH 8620.689 Hz
FIDRES 0.131541 Hz
AQ 3.8011379 sec
RG 203
DW 58.000 usec
DE 6.50 usec
TE 300.0 K
D1 1.00000000 sec
TD0 1

===== CHANNEL f1 =====
NUC1 1H
P1 13.22 usec
PL1 -3.00 dB
PL1W 20.99974442 W
SFO1 400.1319006 MHz
SI 32768
SF 400.1300052 MHz
WDW EM
SSB 0
LB 0.30 Hz
GB 0
PC 1.00



2.01
0.99
3.00
1.01
1.99
1.06