



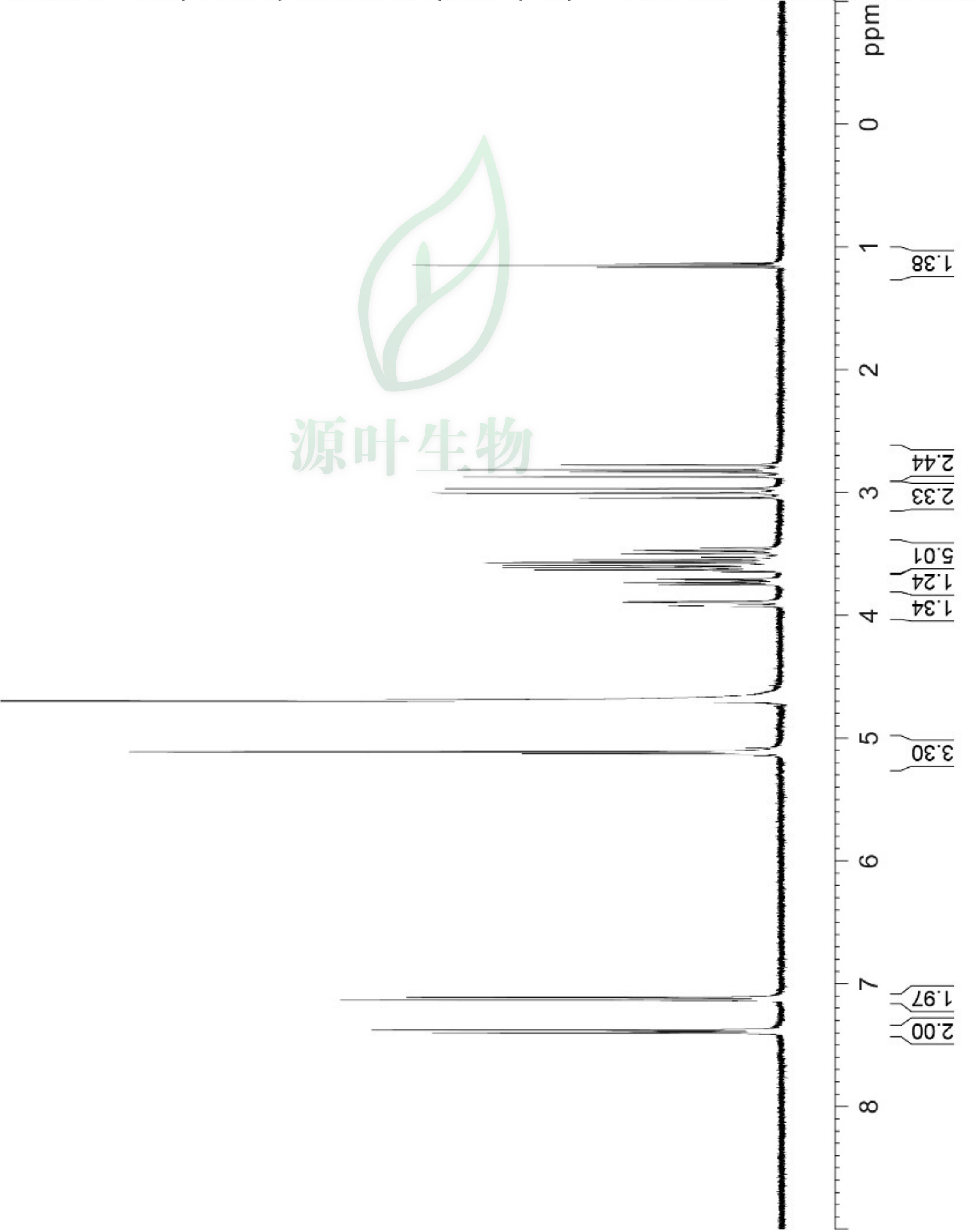
7.402  
7.381  
7.136  
7.114  
5.147  
5.129  
5.114  
5.083  
3.927  
3.921  
3.896  
3.890  
3.752  
3.738  
3.721  
3.707  
3.650  
3.637  
3.632  
3.623  
3.614  
3.608  
3.594  
3.572  
3.552  
3.529  
3.499  
3.476  
3.453  
3.044  
3.009  
3.006  
2.970  
2.874  
2.836  
2.818  
2.778  
1.170  
1.152  
1.134

Current Data Parameters  
NAME Parishin E-1H NMR D2O  
EXPNO 2  
PROCNO 1

F2 - Acquisition Parameters  
Date\_ 20180116  
Time 16.09  
INSTRUM spect  
PROBHD 5 mm PABBO BB/  
PULPROG zg30  
TD 65536  
SOLVENT D2O  
NS 16  
DS 2  
SWH 8012.820 Hz  
FIDRES 0.122266 Hz  
AQ 4.0894465 sec  
RG 202.5  
DW 62.400 usec  
DE 6.50 usec  
TE 301.1 K  
D1 1.00000000 sec  
TD0 1

===== CHANNEL f1 =====  
SFO1 400.1324710 MHz  
NUC1 1H  
P1 14.79 usec  
PLW 11.50800037 W

F2 - Processing parameters  
SI 65536  
SF 400.1300000 MHz  
WDW no  
SSB 0  
LB 0 Hz  
GB 0  
PC 1.00  
SR 0 Hz





5.147  
5.129  
5.114  
5.083

7.402  
7.381  
7.136  
7.114

Current Data Parameters  
NAME Parishin E-1H NMR D2O  
EXPNO 2  
PROCNO 1

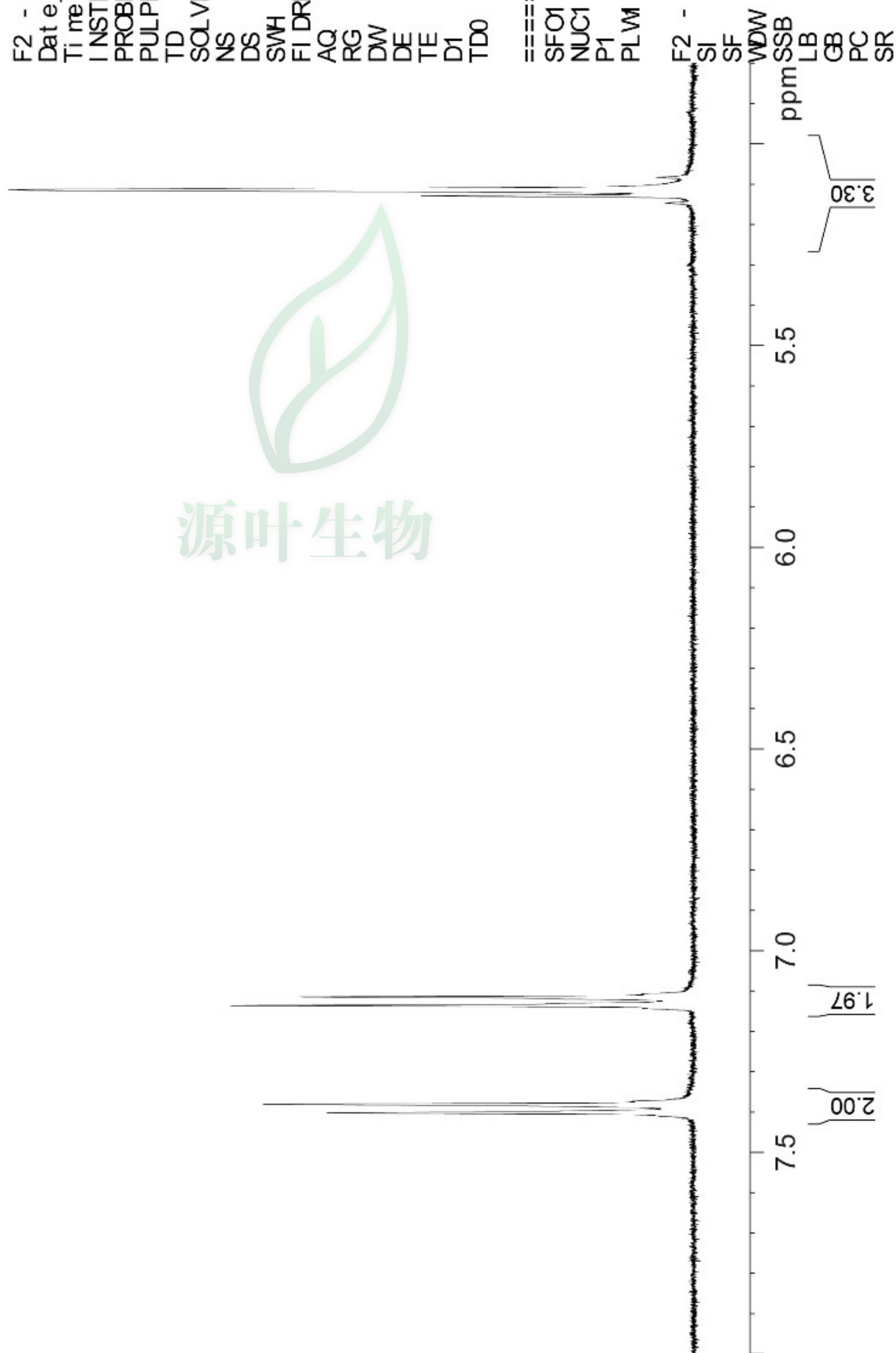
# F2 - Acquisition Parameters

Date\_ 20180116  
Time 16.09  
INSTRUM spect  
PROBHD 5 mm PABBO BB/  
PULPROG zg30  
TD 65536  
SOLVENT D2O  
NS 16  
DS 2  
SWH 8012.820 Hz  
FIDRES 0.122266 Hz  
AQ 4.0894465 sec  
RG 202.5  
DW 62.400 usec  
DE 6.50 usec  
TE 301.1 K  
D1 1.00000000 sec  
TD0 1

===== CHANNEL f1 =====  
SFO1 400.1324710 MHz  
NUC1 1H  
P1 14.79 usec  
PLW 11.50800037 W

# F2 - Processing parameters

SI 65536  
SF 400.1300000 MHz  
WDW no  
SSB 0  
LB 0 Hz  
GB 0  
PC 1.00  
SR 0 Hz



源叶生物





1.170  
1.152  
1.134

3.752  
3.738  
3.721  
3.707  
3.650  
3.637  
3.632  
3.623  
3.614  
3.608  
3.594  
3.572  
3.552  
3.529  
3.499  
3.476  
3.453  
3.044  
3.009  
3.006  
2.970  
2.874  
2.836  
2.818  
2.778



Current Data Parameters  
NAME Parishin E-1H NMR D2O  
EXPNO 2  
PROCNO 1

F2 - Acquisition Parameters

Date\_ 20180116  
Time 16.09  
INSTRUM spect  
PROBHD 5 mm PABBO BB/  
PULPROG zg30  
TD 65536  
SOLVENT D2O  
NS 16  
DS 2  
SWH 8012.820 Hz  
FIDRES 0.122266 Hz  
AQ 4.0894465 sec  
RG 202.5  
DW 62.400 usec  
DE 6.50 usec  
TE 301.1 K  
D1 1.00000000 sec  
TD0 1

===== CHANNEL f1 =====  
SFO1 400.1324710 MHz  
NUC1 1H  
P1 14.79 usec  
PLW 11.50800037 W

F2 - Processing parameters

SI 65536  
SF 400.1300000 MHz  
WDW no  
SSB 0  
LB 0 Hz  
GB 0  
PC 1.00  
SR 0 Hz

