

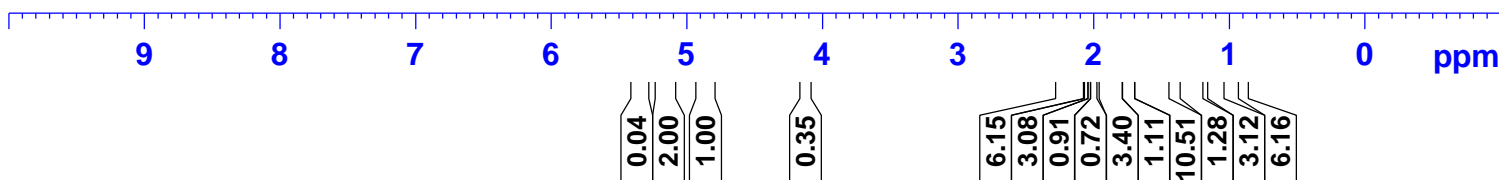
Current Data Parameters
 NAME Incensole acetate-1H NMR CDCl3
 EXPNO 1
 PROCNO 1

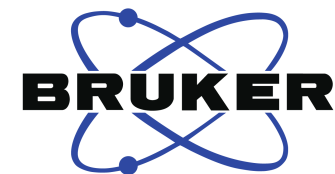
F2 - Acquisition Parameters
 Date_ 20161116
 Time 20.14
 INSTRUM spect
 PROBHD 5 mm PABBO BB/
 PULPROG zg30
 TD 65536
 SOLVENT CDCl3
 NS 16
 DS 2
 SWH 8012.820 Hz
 FIDRES 0.122266 Hz
 AQ 4.0894465 sec
 RG 63.67
 DW 62.400 usec
 DE 6.50 usec
 TE 301.2 K
 D1 2.00000000 sec
 TD0 1

===== CHANNEL f1 =====
 SFO1 400.1324710 MHz
 NUC1 1H
 P1 14.79 usec
 PLW1 11.50800037 W

F2 - Processing parameters
 SI 262144
 SF 400.1300087 MHz
 WDW EM
 SSB 0
 LB 0.30 Hz
 GB 0
 PC 1.00
 SR 8.67 Hz

源叶生物



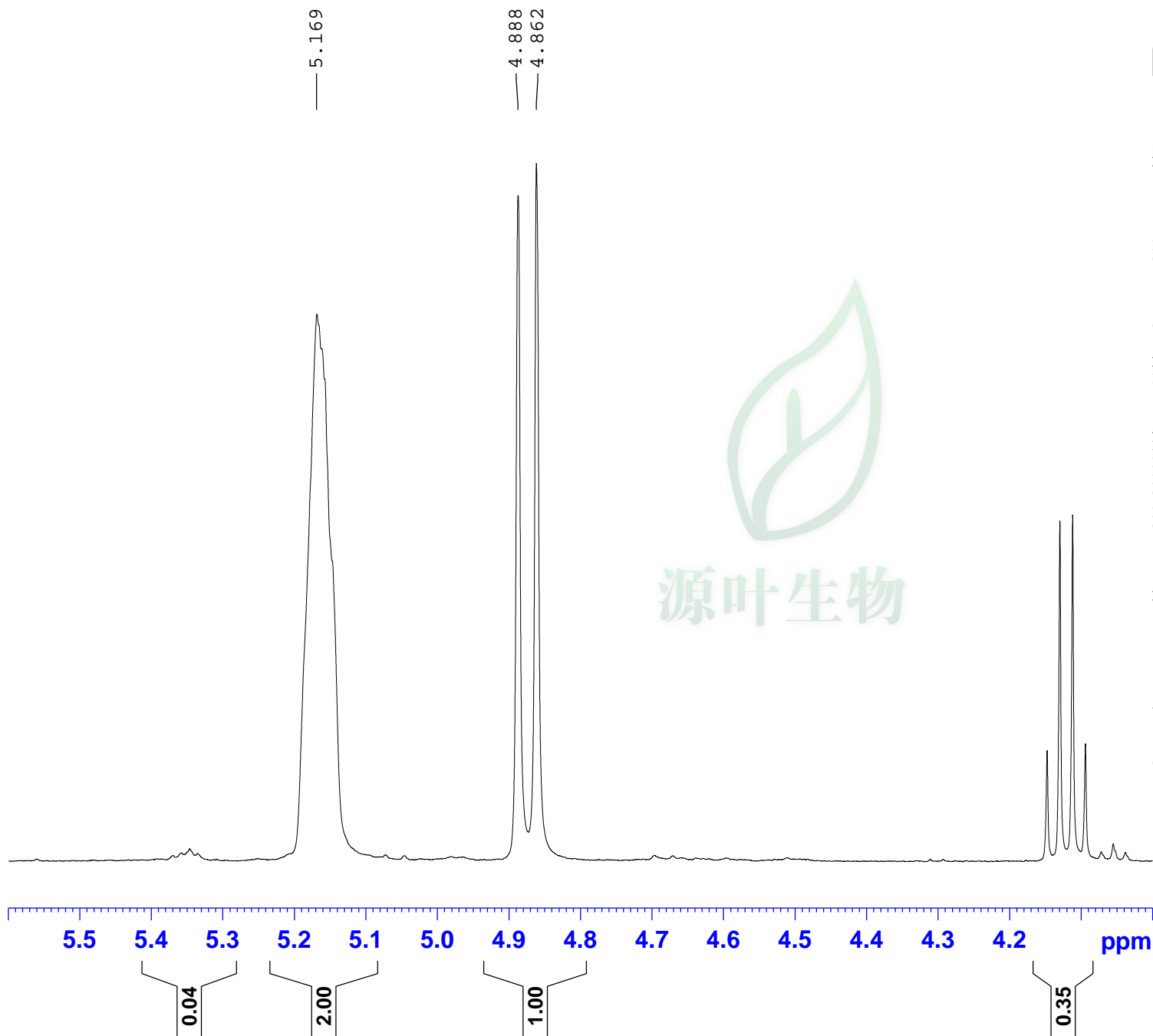


Current Data Parameters
NAME Incensole acetate-1H NMR CDC13
EXPNO 1
PROCNO 1

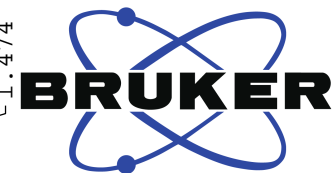
F2 - Acquisition Parameters
Date_ 20161116
Time 20.14
INSTRUM spect
PROBHD 5 mm PABBO BB/
PULPROG zg30
TD 65536
SOLVENT CDC13
NS 16
DS 2
SWH 8012.820 Hz
FIDRES 0.122266 Hz
AQ 4.0894465 sec
RG 63.67
DW 62.400 usec
DE 6.50 usec
TE 301.2 K
D1 2.00000000 sec
TD0 1

===== CHANNEL f1 =====
SFO1 400.1324710 MHz
NUC1 1H
P1 14.79 usec
PLW1 11.50800037 W

F2 - Processing parameters
SI 262144
SF 400.1300087 MHz
WDW EM
SSB 0
LB 0.30 Hz
GB 0
PC 1.00
SR 8.67 Hz



2.199
2.184
2.170
2.159
2.148
2.130
2.119
2.110
2.091
2.086
2.048
1.934
1.924
1.917
1.900
1.891
1.882
1.877
1.871
1.853
1.842
1.839
1.809
1.806
1.804
1.802
1.798
1.779
1.767
1.759
1.748
1.724
1.672
1.669
1.649
1.636
1.617
1.604
1.590
1.570
1.564
1.551
1.536
1.532
1.524
1.520
1.515
1.510
1.506
1.500
1.489
1.484
1.474



Current Data Parameters

NAME Incensole acetate-1H NMR CDC13
EXPNO 1
PROCNO 1

F2 - Acquisition Parameters

Date_ 20161116
Time 20.14
INSTRUM spect
PROBHD 5 mm PABBO BB/
PULPROG zg30
TD 65536
SOLVENT CDC13
NS 16
DS 2
SWH 8012.820 Hz
FIDRES 0.122266 Hz
AQ 4.0894465 sec
RG 63.67
DW 62.400 usec
DE 6.50 usec
TE 301.2 K
D1 2.00000000 sec
TD0 1

===== CHANNEL f1 =====

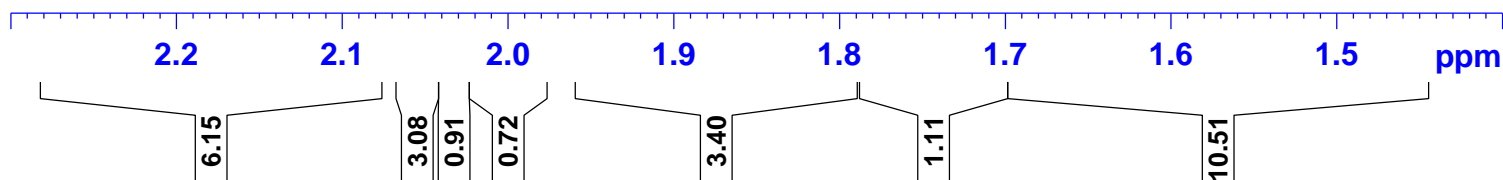
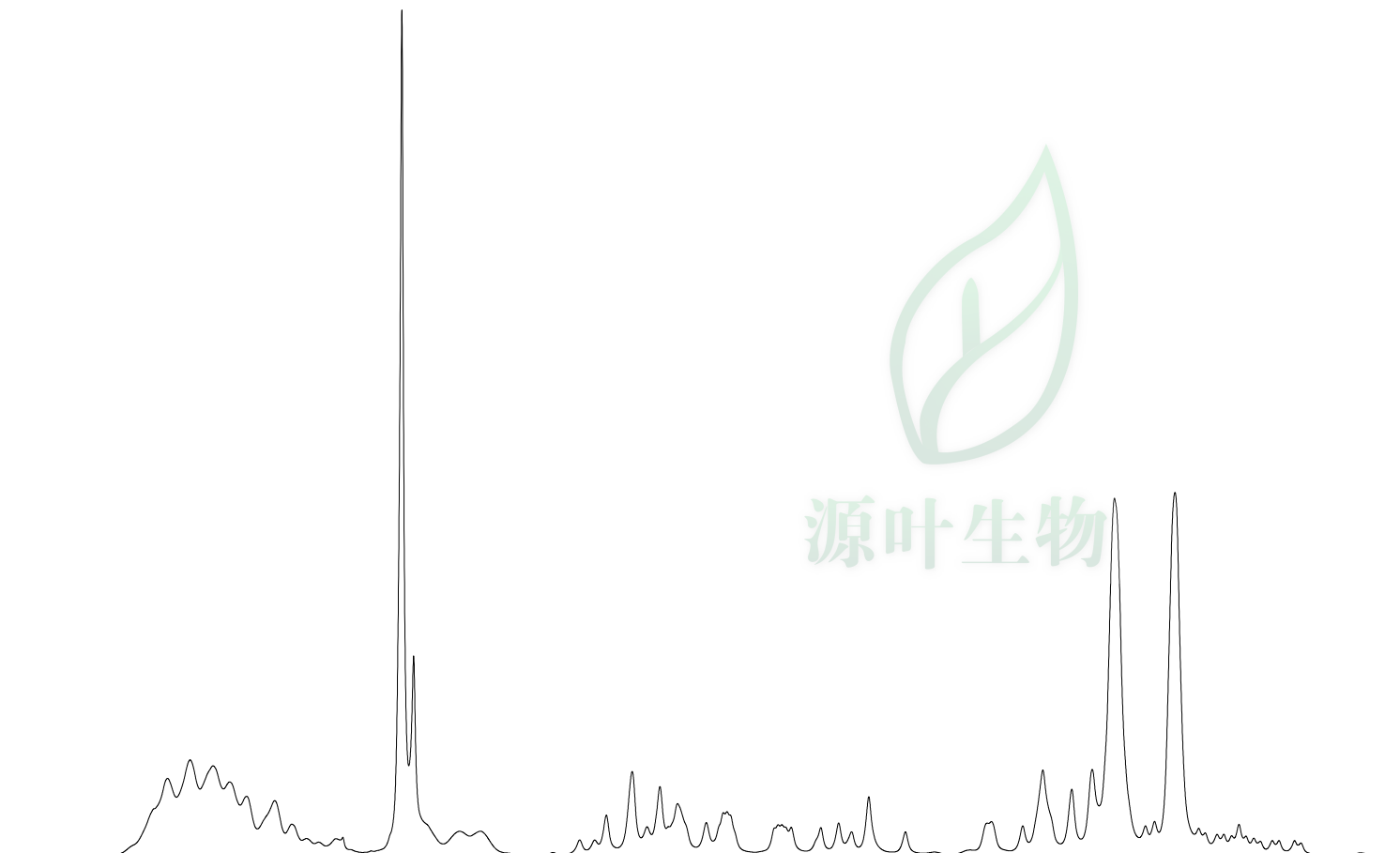
SFO1 400.1324710 MHz
NUC1 1H
P1 14.79 usec
PLW1 11.50800037 W

F2 - Processing parameters

SI 262144
SF 400.1300087 MHz
WDW EM
SSB 0
LB 0.30 Hz
GB 0
PC 1.00
SR 8.67 Hz



源叶生物





Current Data Parameters
NAME Incensole acetate-1H NMR CDC13
EXPNO 1
PROCNO 1

F2 - Acquisition Parameters
Date_ 20161116
Time 20.14
INSTRUM spect
PROBHD 5 mm PABBO BB/
PULPROG zg30
TD 65536
SOLVENT CDC13
NS 16
DS 2
SWH 8012.820 Hz
FIDRES 0.122266 Hz
AQ 4.0894465 sec
RG 63.67
DW 62.400 usec
DE 6.50 usec
TE 301.2 K
D1 2.00000000 sec
TD0 1

===== CHANNEL f1 =====
SF01 400.1324710 MHz
NUC1 1H
P1 14.79 usec
PLW1 11.50800037 W

F2 - Processing parameters
SI 262144
SF 400.1300087 MHz
WDW EM
SSB 0
LB 0.30 Hz
GB 0
PC 1.00
SR 8.67 Hz

