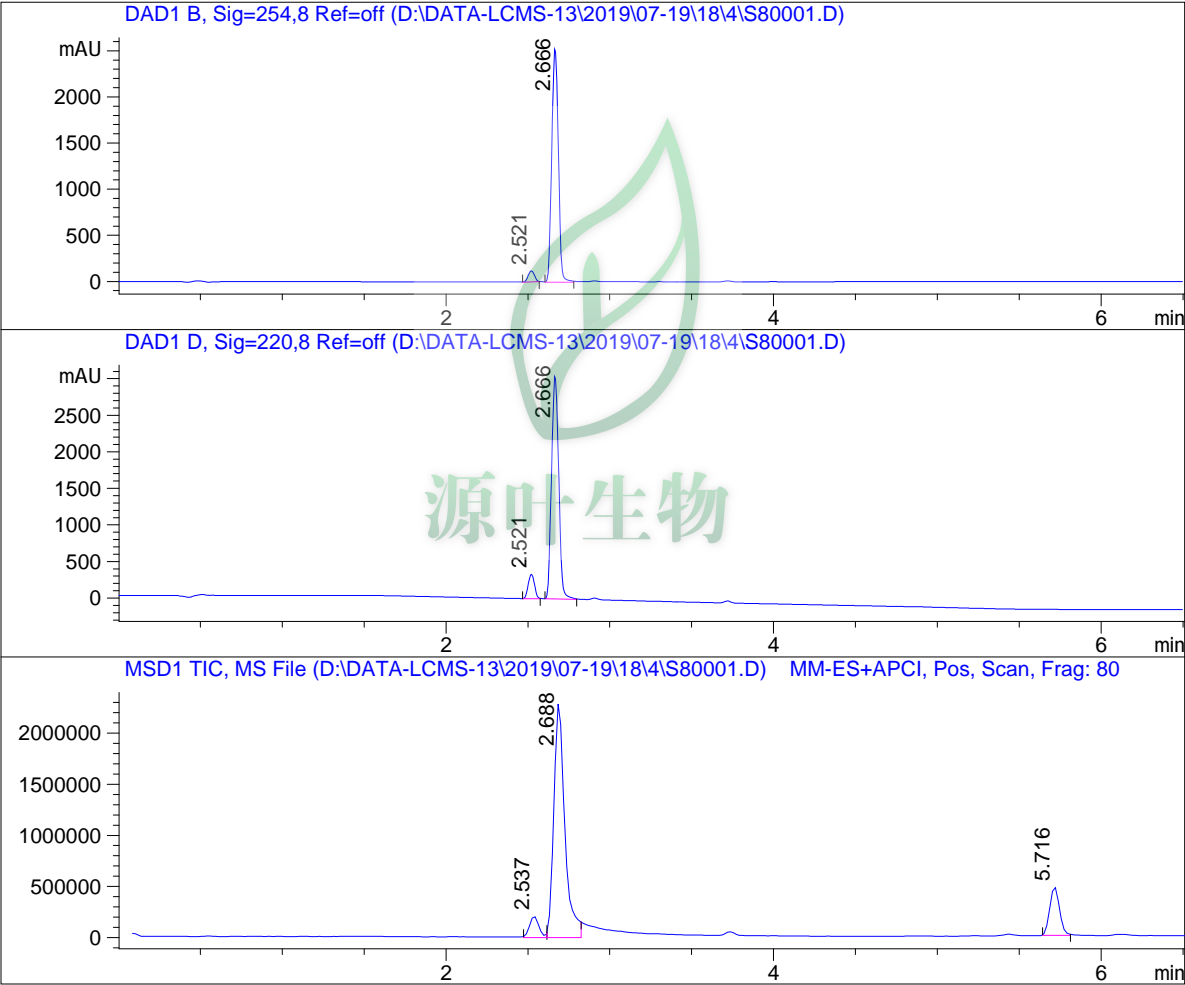


# LC - MS Report

Sample Name : S80001  
Data File : D:\DATA-LCMS-13\2019\07-19\18\4\S80001.D  
Injection Date : Thu, 18. Jul. 2019 Inj. Vol. : 5ul  
Acq Operator : LCMS-13 Location : Vial 73  
Acq. Method : D:\data-lcms-13\2019\07-19\18\4\P-05-95.M  
Method Info.: column:C18;column size:4.6\*50mm ;mobile phase:B(ACN),  
A(0.02%NH4Ac); gradient(B%):as Acq.Method above



=====  
Integration Results  
=====

Signal 1: DAD1 B, Sig=254,8 Ref=off

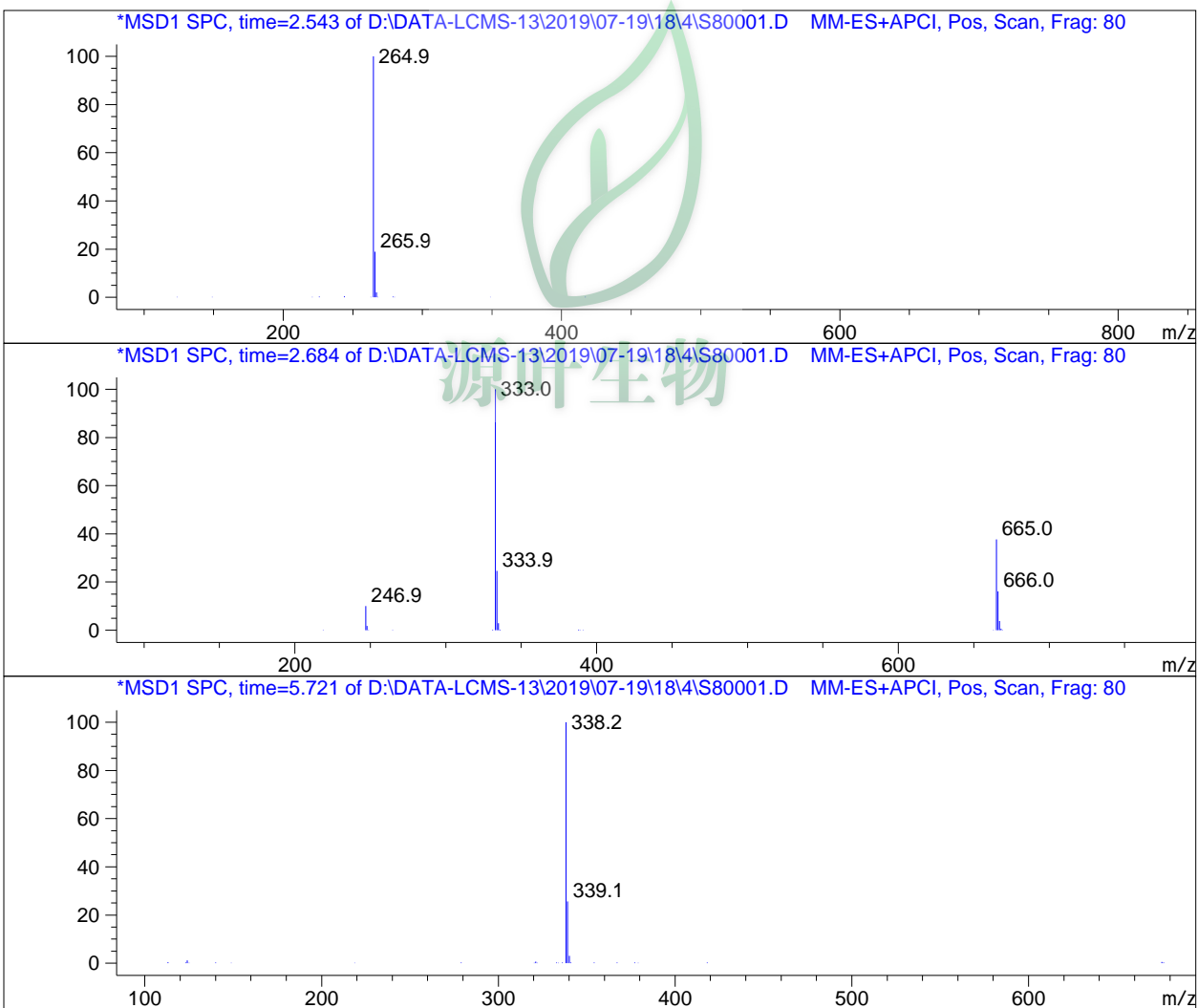
#	R.T.	Type	Height	Height%	Width	Area	Area %
1	2.521	MM	119.647	4.463	0.044	315.857	4.249
2	2.666	MM	2561.219	95.537	0.046	7117.097	95.751

Signal 2: DAD1 D, Sig=220,8 Ref=off

#	R.T.	Type	Height	Height%	Width	Area	Area %
1	2.521	MM	335.872	9.828	0.044	894.614	8.754
2	2.666	MM	3081.615	90.172	0.050	9324.919	91.246

Signal 3: MSD1 TIC, MS File

#	R.T.	Type	Height	Height%	Width	Area	Area %
1	2.537	MF	213208.906	7.023	0.074	943384.563	6.885
2	2.688	FM	2.343e+006	77.176	0.077	1.080e+007	78.826
3	5.716	MM	479688.438	15.801	0.068	1.958e+006	14.289



\*\*\* End of Report \*\*\*