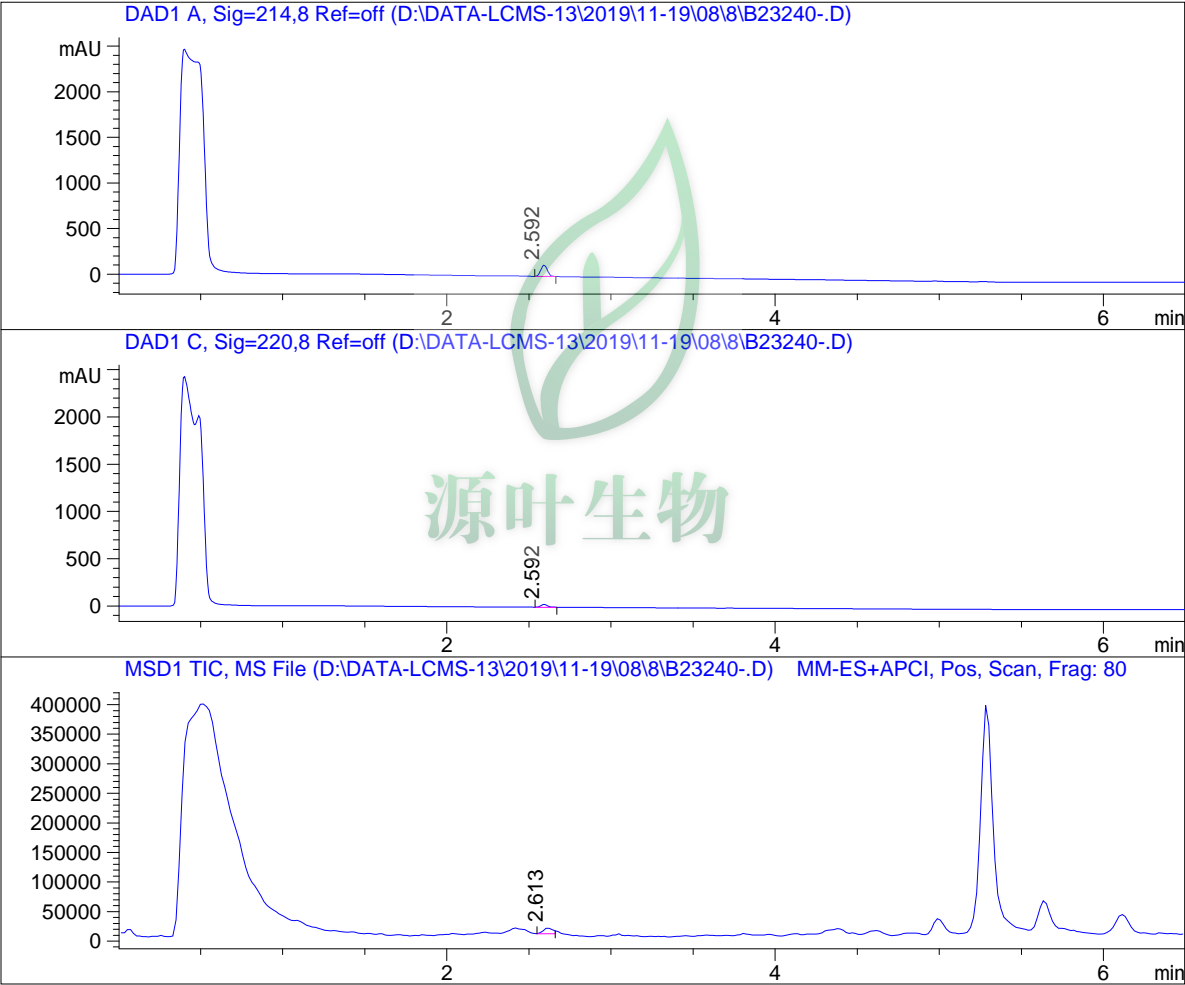


LC - MS Report

Sample Name : B23240
Data File : D:\DATA-LCMS-13\2019\11-19\08\8\B23240-.D
Injection Date : Sat, 9. Nov. 2019 Inj. Vol. : 10ul
Acq Operator : LCMS-13 Location : Vial 34
Acq. Method : D:\data-lcms-13\2019\11-19\08\8\P-05-95-C2-100-2000
Method Info. : column:C18;column size:4.6*50mm ;mobile phase:B(ACN),
A(0.02%NH4Ac); gradient(B%):as Acq.Method above



=====
Integration Results
=====

Signal 1: DAD1 A, Sig=214,8 Ref=off

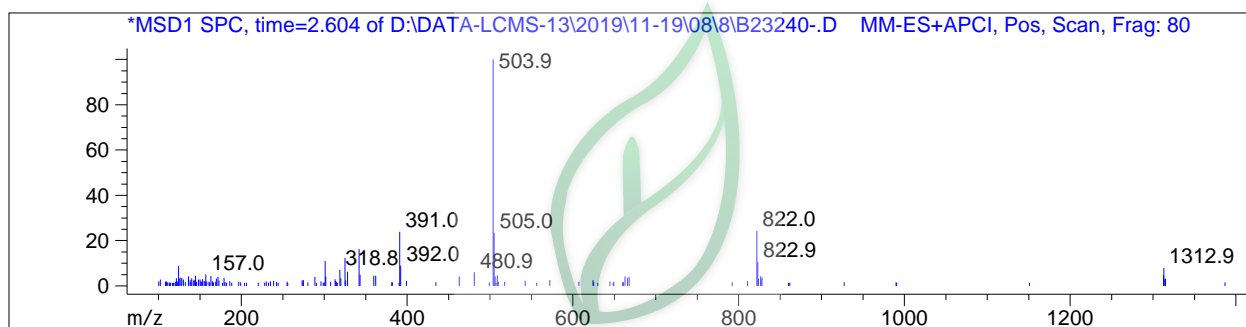
| # | R.T. | Type | Height | Height% | Width | Area | Area % |
|---|-------|------|---------|---------|-------|---------|---------|
| 1 | 2.592 | MM | 123.067 | 100.000 | 0.047 | 346.361 | 100.000 |

Signal 2: DAD1 C, Sig=220,8 Ref=off

| # | R.T. | Type | Height | Height% | Width | Area | Area % |
|---|----------|------|--------|---------|-------|--------|---------|
| 1 | 2.592 MM | | 28.052 | 100.000 | 0.047 | 79.818 | 100.000 |

Signal 3: MSD1 TIC, MS File

| # | R.T. | Type | Height | Height% | Width | Area | Area % |
|---|----------|------|----------|---------|-------|-----------|---------|
| 1 | 2.613 MM | | 9983.223 | 100.000 | 0.067 | 39978.875 | 100.000 |



*** End of Report ***