

## LCMS Analysis Report

Acquired by : System Administrator  
 Sample Name : MS  
 Injection Volume : 0.6  
 Data File : MS.lcd  
 Report Format File : MS.lsr  
 Date Acquired : 2019/8/19 9:25:21  
 Comment : Mobile phaseA:Water/5mM NH<sub>4</sub>HCO<sub>3</sub>;  
 Mobile phaseB:Acetonitrile

Instrument Name:Shimadzu LCMS-2020

### <<Pump>>

Mode : Binary gradient  
 Pump A : LC-20ADXR  
 Pump B : LC-20ADXR  
 Total Flow : 1.2000 mL/min  
 B Conc. : 10.0 %

### <<Interface>>

Interface :ESI  
 DL Temperature :250 C  
 Nebulizing Gas Flow :1.50 L/min  
 Heat Block :250 C  
 Drying Gas :On  
 :12.00 L/min

### <<Oven>>

Oven Temperature : 40 C

### <<MS Parameter>>

Initial Valve Position :-  
 --Segment 1 Event 1--  
 Start Time :0.00 min  
 End Time :4.00 min  
 Acquisition Mode :Scan  
 Polarity :Positive  
 Event Time :0.50 sec  
 Detector Voltage :+0.85 kV  
 Threshold :0  
 Start m/z :90.00  
 End m/z :900.00  
 Scan Speed :1875 u/sec  
 Interface Volt. :Use the Data in the Tuning File  
 DL Volt. :Use the Data in the Tuning File  
 Qarray DC Voltage :Use the Data in the Tuning File  
 Qarray DC Voltage :Use the Data in the Tuning File  
 --Segment 1 Event 2--  
 Start Time :0.00 min  
 End Time :4.00 min  
 Acquisition Mode :Scan  
 Polarity :Negative  
 Event Time :1.00 sec  
 Detector Voltage :+0.85 kV  
 Threshold :0  
 Start m/z :90.00  
 End m/z :900.00  
 Scan Speed :834 u/sec  
 Interface Volt. :Use the Data in the Tuning File  
 DL Volt. :Use the Data in the Tuning File  
 Qarray DC Voltage :Use the Data in the Tuning File  
 Qarray DC Voltage :Use the Data in the Tuning File

### System Configuration

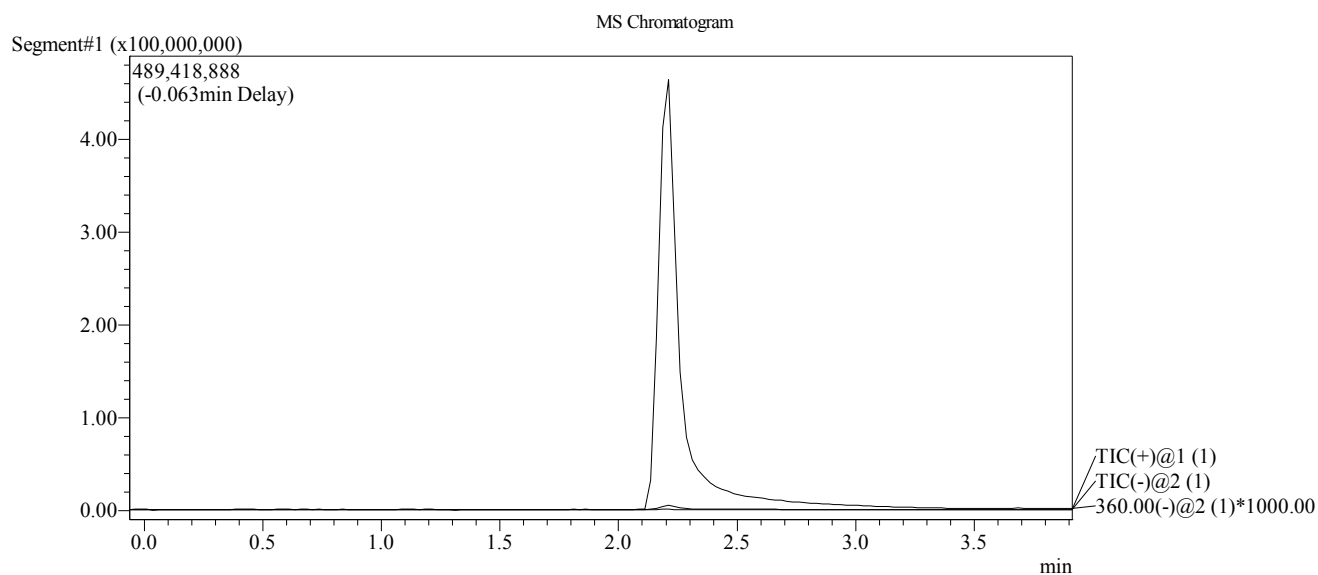
#### <<Column>>

Column Name : Poroshell HPH-c18  
 Column No. : 0  
 Length : 50 mm  
 MaxFlow : 5.0

### <<LC Time Program>>

Time	Module	Command	Value
0.01	Pumps	Pump B Conc.	10
3.00	Pumps	Pump B Conc.	95
3.70	Pumps	Pump B Conc.	95
3.80	Pumps	Pump B Conc.	10
4.00	Controller	Stop	

# <Chromatogram>



Line#:1 R.Time:2.219(Scan#:184)  
MassPeaks:386

