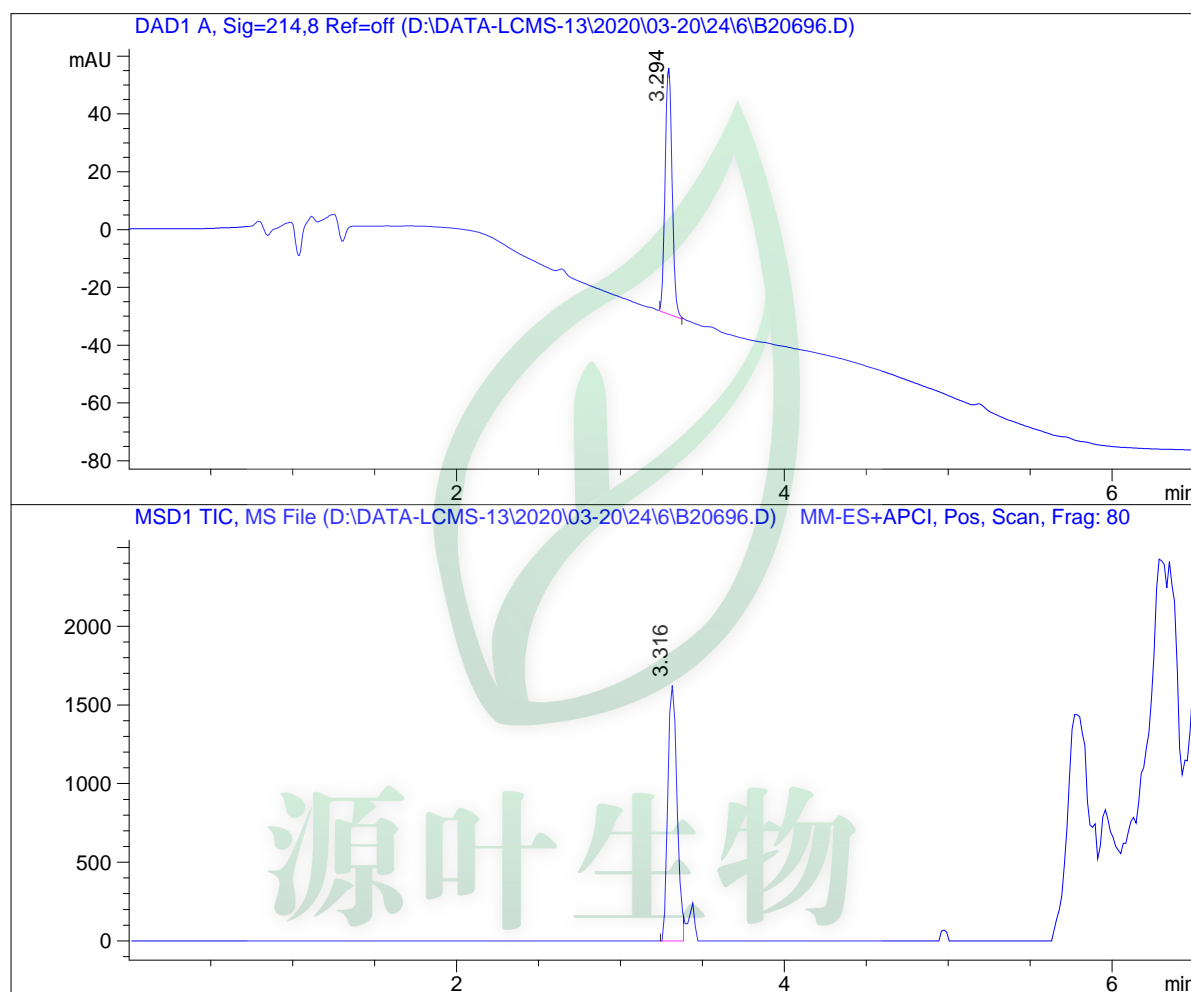


LCMS Report

Sample Name : B20696
Data File : D:\DATA-LCMS-13\2020\03-20\24\6\B20696.D
Injection Date : Tue, 24. Mar. 2020 Inj. Vol. : 5ul
Acq Operator : LCMS-13 Location : Vial 42
Acq. Method : D:\data-lcms-13\2020\03-20\24\6\P-05-95-C2-700-1500
Method Info. : column:Ecclipse XDB-C18 5um 4.6*150mm ;mobile phase:B(ACN), A(0.02%NH4AC); gradient(B%):as Acq.Method above



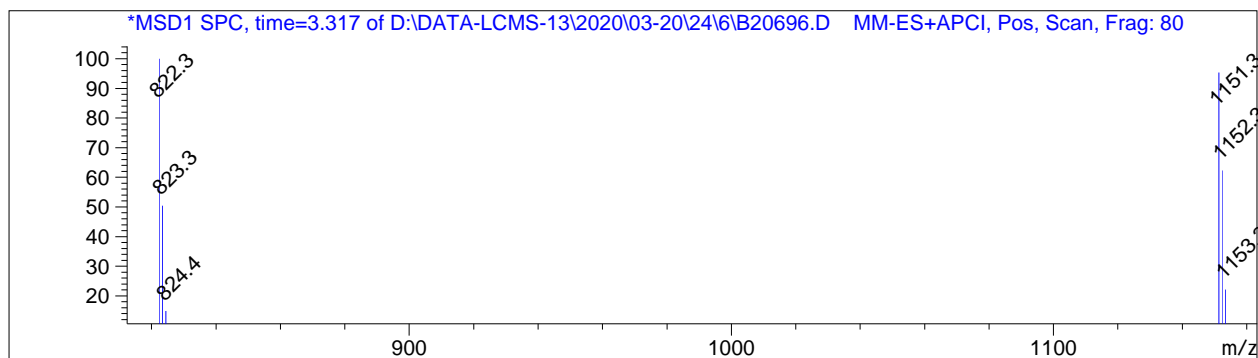
Integration Results

Signal 1: DAD1 A, Sig=214,8 Ref=off

#	R.T.	Type	Height	Height%	Width	Area	Area %
1	3.294	BB	85.474	100.000	0.047	254.235	100.000

Signal 2: MSD1 TIC, MS File

#	R.T.	Type	Height	Height%	Width	Area	Area %
1	3.316	MF	1641.512	100.000	0.065	6406.814	100.000



*** End of Report ***



源叶生物