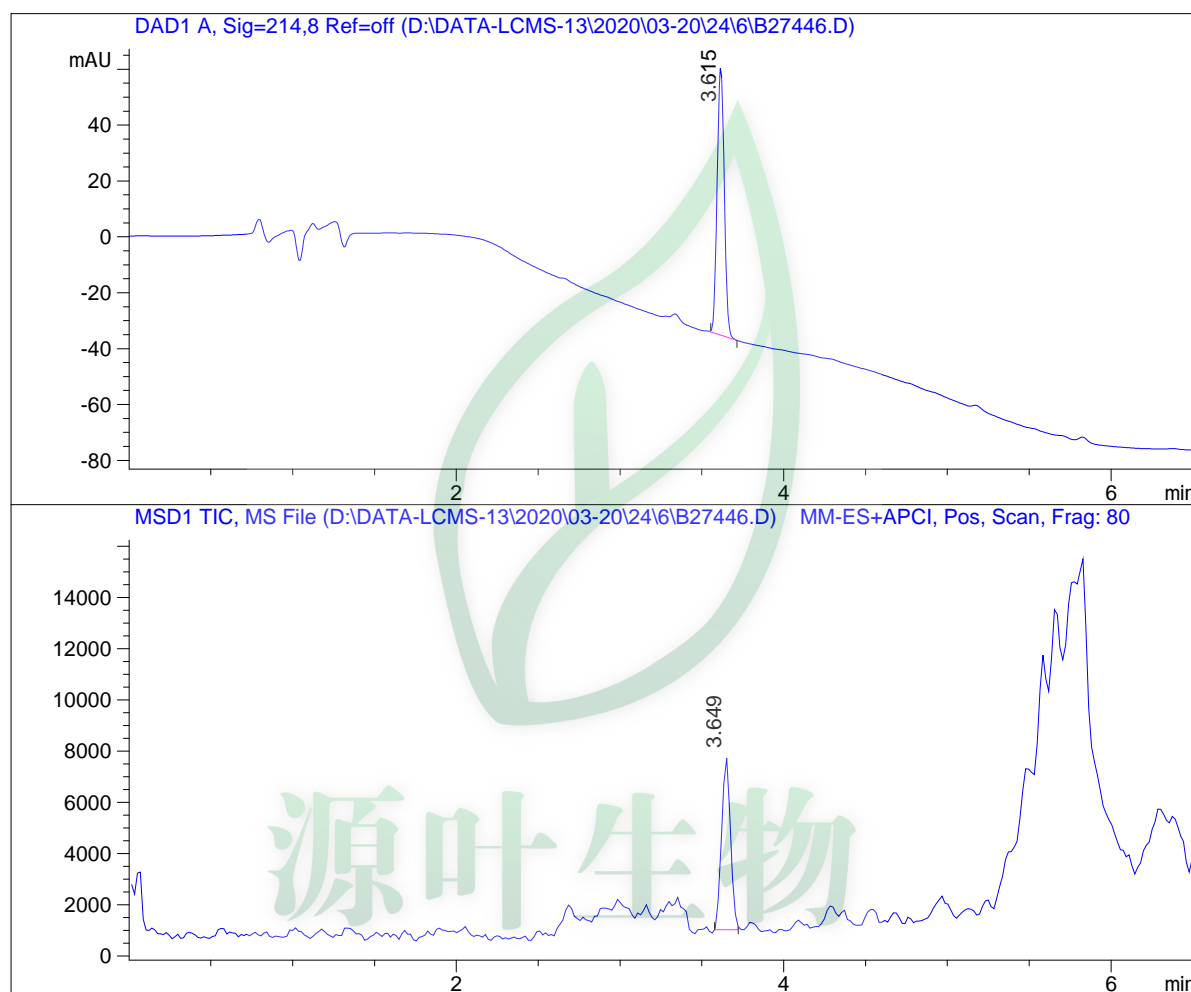


# LCMS Report

Sample Name : B27446  
Data File : D:\DATA-LCMS-13\2020\03-20\24\6\B27446.D  
Injection Date : Wed, 25. Mar. 2020 Inj. Vol. : 5ul  
Acq Operator : LCMS-13 Location : Vial 43  
Acq. Method : D:\data-lcms-13\2020\03-20\24\6\P-05-95-C2.M  
Method Info. : column:Ecclipse XDB-C18 5um 4.6\*150mm ;mobile phase:B(ACN), A(0.02%NH4AC); gradient(B%):as Acq.Method above



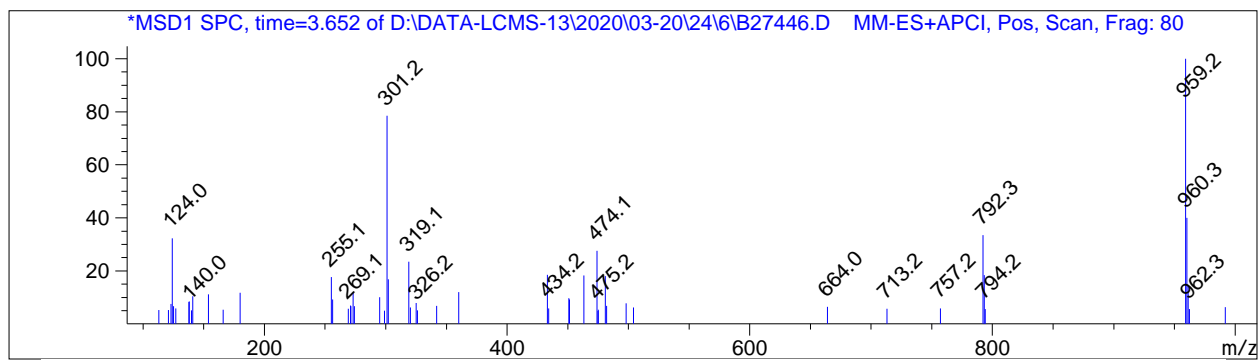
## Integration Results

Signal 1: DAD1 A, Sig=214,8 Ref=off

#	R.T.	Type	Height	Height%	Width	Area	Area %
1	3.615	BB	95.716	100.000	0.049	290.559	100.000

Signal 2: MSD1 TIC, MS File

#	R.T.	Type	Height	Height%	Width	Area	Area %
1	3.649	MM	6874.527	100.000	0.062	25411.117	100.000



\*\*\* End of Report \*\*\*



源叶生物