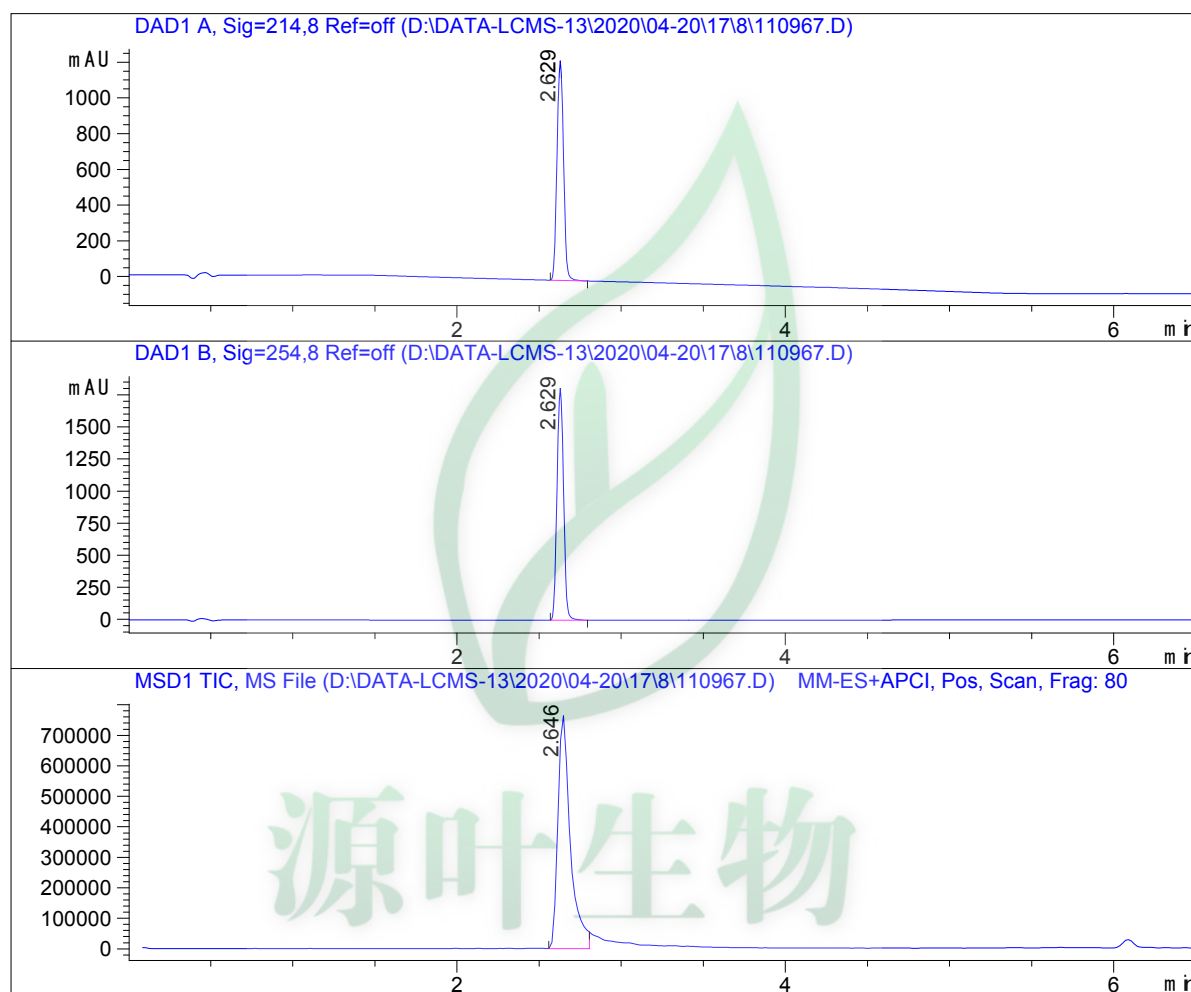


LCMS Report

Sample Name : 110967
Data File : D:\DATA-LCMS-13\2020\04-20\17\8\110967.D
Injection Date : Sun, 19. Apr. 2020 Inj. Vol. : 5ul
Acq Operator : LCMS-13 Location : Vial 74
Acq. Method : D:\data-lcms-13\2020\04-20\17\8\P-05-95.M
Method Info. : column:Xbridge C18 5um 4.6*30mm ;mobile phase:B (ACN),
A(0.02%NH4Ac); gradient(B%):as Acq.Method above



Integration Results

Signal 1: DAD1 A, Sig=214,8 Ref=off

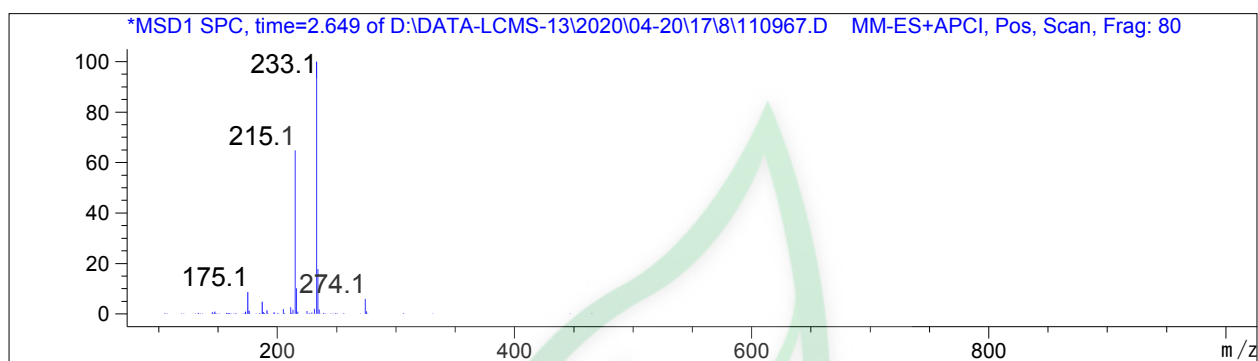
#	R.T.	Type	Height	Height%	Width	Area	Area %
1	2.629	BB	1229.843	100.000	0.044	3420.834	100.000

Signal 2: DAD1 B, Sig=254,8 Ref=off

#	R.T.	Type	Height	Height%	Width	Area	Area %
1	2.629	BB	1810.951	100.000	0.045	5067.313	100.000

Signal 3: MSD1 TIC, MS File

#	R.T.	Type	Height	Height%	Width	Area	Area %
1	2.646	MF	776042.313	100.000	0.087	4.067e+006	100.000



*** End of Report ***

源叶生物