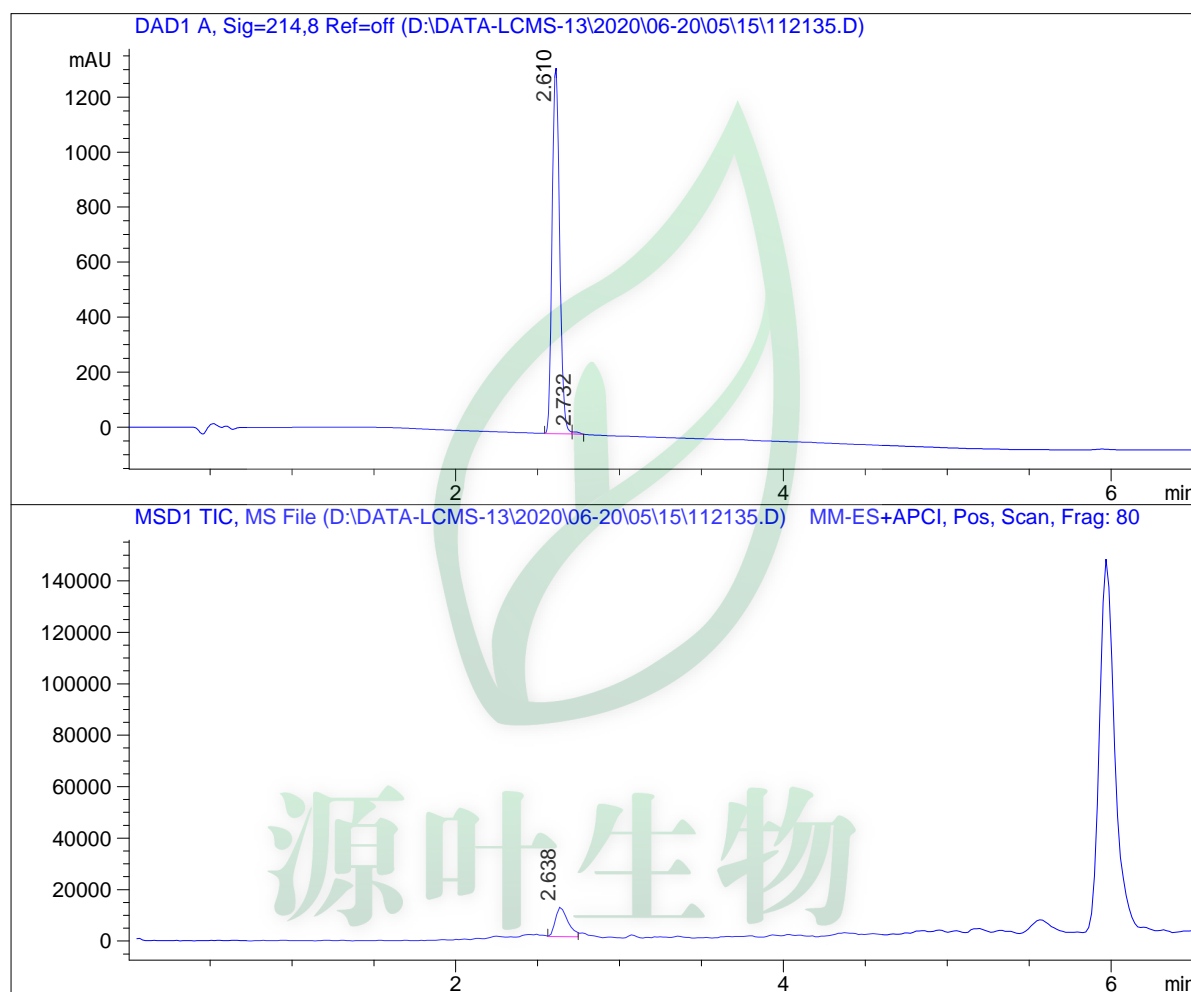


LCMS Report

Sample Name : 112135
Data File : D:\DATA-LCMS-13\2020\06-20\05\15\112135.D
Injection Date : Sun, 7. Jun. 2020 Inj. Vol. : 10ul
Acq Operator : LCMS-13 Location : Vial 52
Acq. Method : D:\data-lcms-13\2020\06-20\05\15\P-05-95.M
Method Info. : column:Xbridge C18 5um 4.6*50mm ;mobile phase:B(ACN),
A(0.02%NH4Ac); gradient(B%):as Acq.Method above



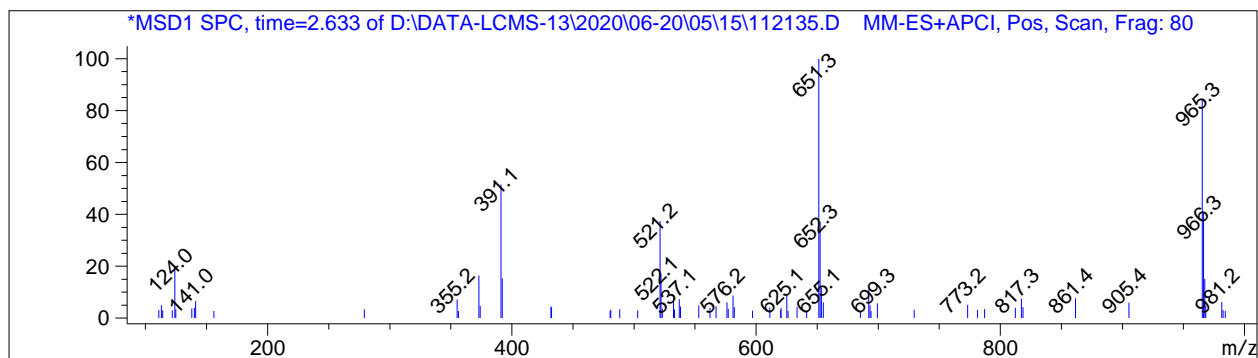
Integration Results

Signal 1: DAD1 A, Sig=214,8 Ref=off

#	R.T.	Type	Height	Height%	Width	Area	Area %
1	2.610	MF	1338.504	99.420	0.053	4224.506	99.484
2	2.732	FM	7.804	0.580	0.047	21.918	0.516

Signal 2: MSD1 TIC, MS File

#	R.T.	Type	Height	Height%	Width	Area	Area %
1	2.638	MF	11591.941	100.000	0.088	61239.168	100.000



*** End of Report ***



源叶生物